

### ● FEATURES

- EXCELLENT CLOCK SIGNAL GENERATOR FOR CPU'S
- 3.5 mm MAXIMUM HEIGHT
- AVAILABLE IN EXTENDED TEMPERATURE RANGE
- SAME PIN LAYOUT AS HC-49/U

### SERIES AS HC-49/S

### ● SPECIFICATIONS

FREQUENCY RANGE		3.20 MHz TO 70.00 MHz
MODE OF OSCILLATION	FUNDAMENTAL	3.20 MHz TO 40.320 MHz
	THIRD OVERTONE	24.576 MHz TO 70.00 MHz
FREQUENCY TOLERANCE AT 25°C		±30 PPM TYPICAL ±50 PPM MAXIMUM
FREQUENCY STABILITY OVER TEMPERATURE RANGE		±50 PPM TYPICAL ±100 PPM MAXIMUM
OPERATING TEMPERATURE RANGE		-20° C TO +70° C STANDARD
		-40° C TO +85° C EXTENDED
STORAGE TEMPERATURE RANGE		-55° C TO +125° C
AGING		±5 PPM PER YEAR MAXIMUM
LOAD CAPACITANCE		10 pF TO 32 pF OR SERIES
EQUIVALENT SERIES RESISTANCE (ESR)		SEE TABLE
DRIVE LEVEL		0.1 mW TYPICAL
CRYSTAL CUT		AT STRIP



SMD VERSION IS SHOWN ON PAGE 20

### ● TYPICAL FREQUENCIES AND ESR CHARACTERISTICS

FREQUENCY (MHz)	ESR MAX (OHM)	MODE	FREQUENCY (MHz)	ESR MAX (OHM)	MODE	FREQUENCY (MHz)	ESR MAX (OHM)	MODE	FREQUENCY (MHz)	ESR MAX (OHM)	MODE
3.579545	200	FUND	8.064	80	FUND	14.7456	50	FUND	47.92	80	3OT
3.6864	200	FUND	8.192	80	FUND	16.00	50	FUND	48.00	80	3OT
4.00	150	FUND	8.6436	80	FUND	16.000312	50	FUND	50.688	80	3OT
4.032	150	FUND	9.60	60	FUND	16.384	50	FUND	52.416	80	3OT
4.096	150	FUND	9.8304	60	FUND	19.6608	50	FUND	56.448	80	3OT
4.194304	150	FUND	10.00	60	FUND	20.00	50	FUND	60	80	3OT
4.433619	150	FUND	10.24	60	FUND	24.00	50	FUND	70.00	80	3OT
4.9152	150	FUND	10.244	60	FUND	24.576	50/80	FUND/3OT			
5.0688	120	FUND	10.245	60	FUND	27.00	50/80	FUND/3OT			
6.00	100	FUND	11.00	60	FUND	28.63636	50/80	FUND/3OT			
6.144	100	FUND	11.0592	60	FUND	29.00	50/80	FUND/3OT			
6.176	100	FUND	11.2896	60	FUND	32.00	50/80	FUND/3OT			
7.15909	80	FUND	12.00	60	FUND	32.768	50/80	FUND/3OT			
7.3728	80	FUND	12.288	60	FUND	36.00	50/80	FUND/3OT			
7.680	80	FUND	12.80	60	FUND	40.00	50/80	FUND/3OT			
8.00	80	FUND	14.31818	60	FUND	40.320	50/100	FUND/3OT			

OTHER FREQUENCIES ARE AVAILABLE

### ● PART NUMBERING SYSTEM

HOLDER TYPE		FREQUENCY	LOAD CAPACITANCE	MODE		EXTENDED TEMPERATURE
AS	HC-49/S	IN MHz	10 TO 32pF FOR PARALLEL S FOR SERIES	FUND 3OT	FUNDAMENTAL† THIRD OVERTONE	EXT

MECHANICAL OPTIONS		HEIGHT		TAPE AND REEL
THREE PIN BASE	SPACER	STD†	3.5 mm	T
3PIN	SP	H3	3.0 mm (CUSTOM)	
		H28	2.8 mm (CUSTOM)	

EXAMPLE: AS-16.000-20-H3

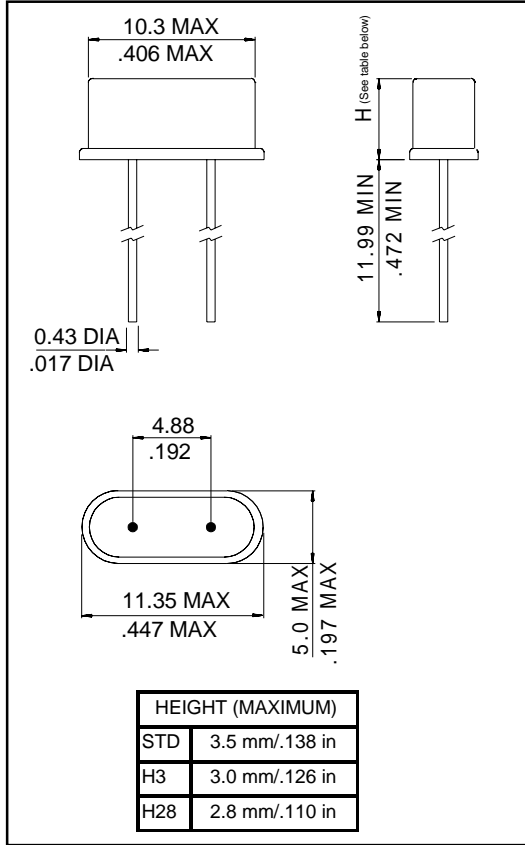
AS-32.000-18-3OT-SP-EXT-T

† NO OPTION CODE NEEDED WHEN "STD" OR FUNDAMENTAL IS SPECIFIED.

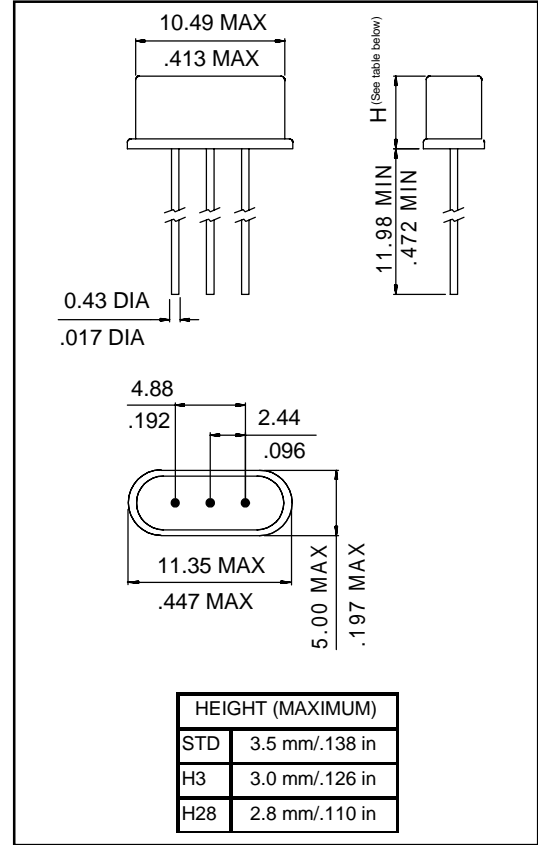
TAPE AND REEL QUANTITY IS 1K PIECES.

● OUTLINE DRAWINGS

**SERIES AS**  
**HC-49/S**

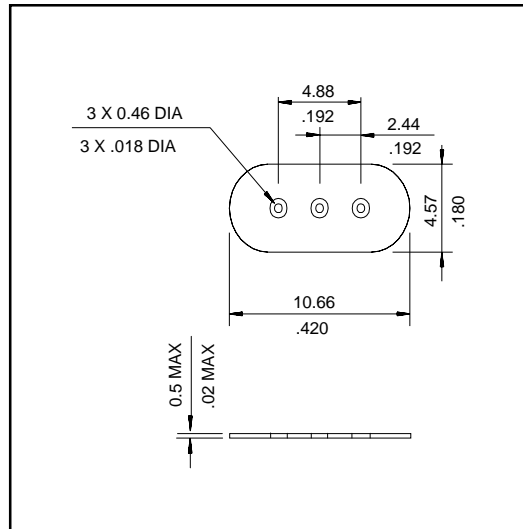


**TYPE AS (HC-49/S)**



**TYPE AS-3PIN (HC-49/S CENTER GROUND PIN)**  
**OPTION: 3-PIN**

Scale none Dimension in  $\frac{\text{mm}}{\text{inch}}$



**PLASTIC SPACER**  
**OPTION: SP**