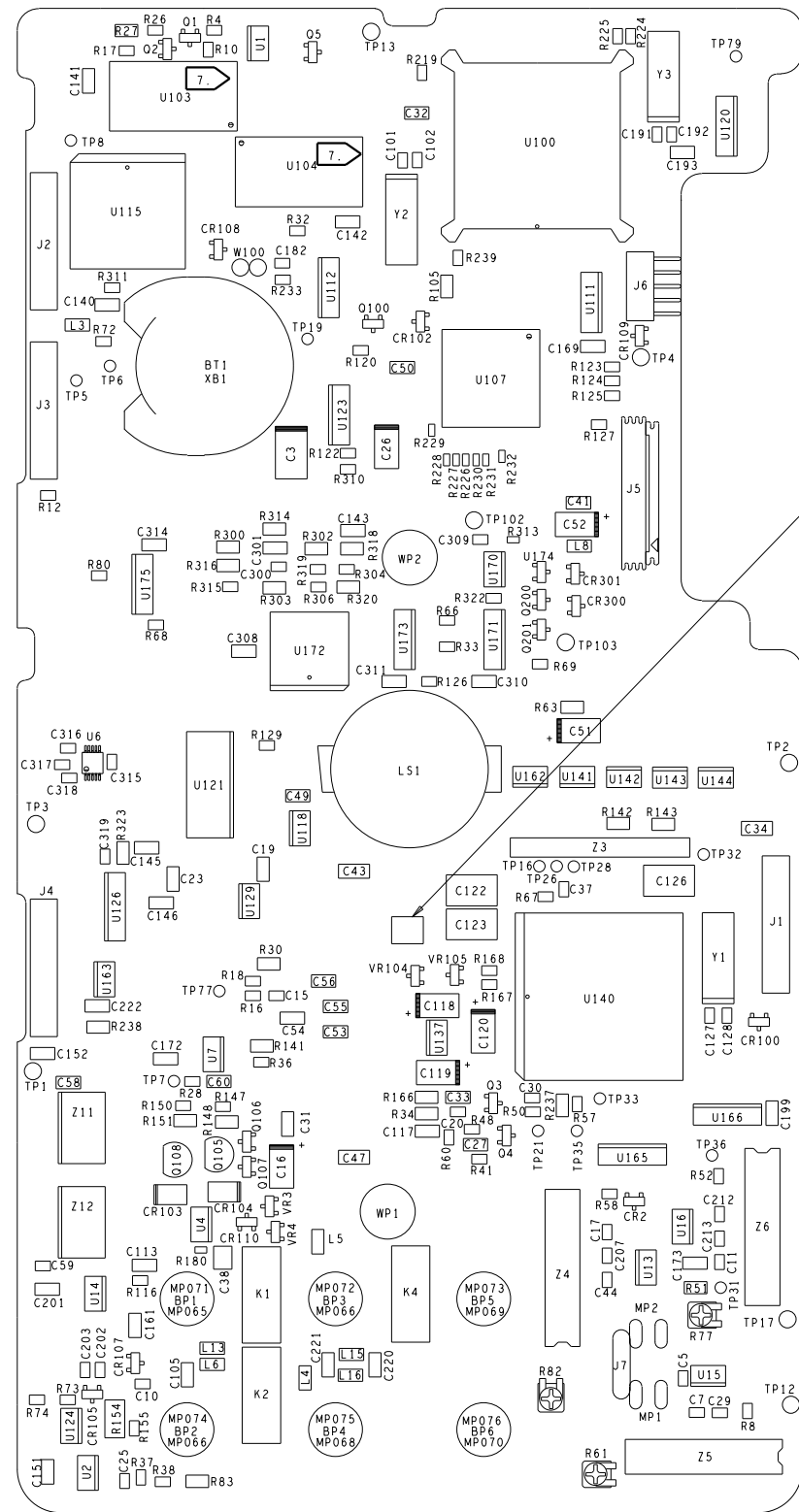
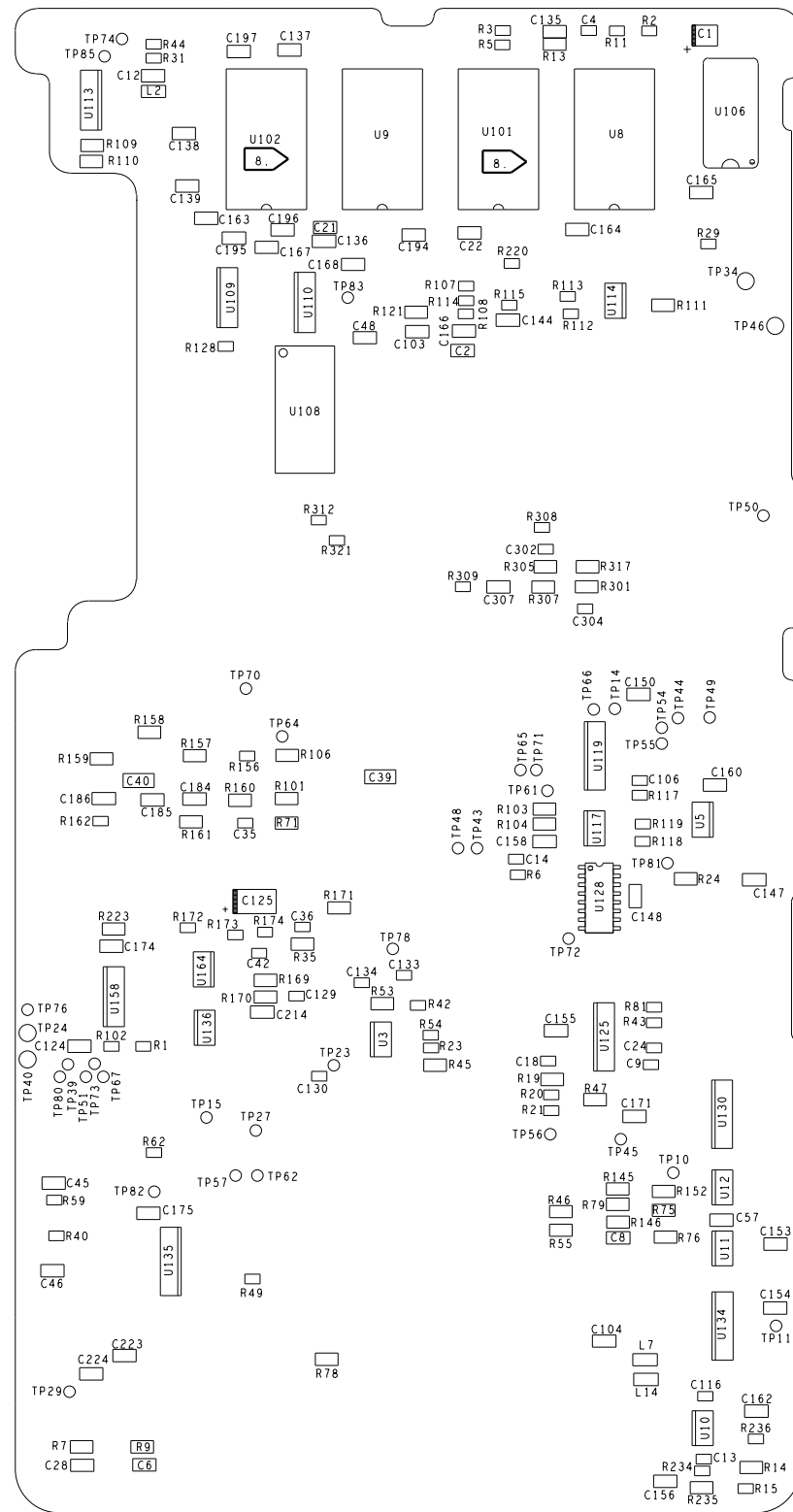


DWG NO.	FLUKE-744-4032	SH 1	1
REVISIONS			
REV	DESCRIPTION	DRAWN	
121	W2009382: ADDED J6 TO NOTE 5.	LJP 28SEP07	



REF\_DES TOP



REF\_DES BOTTOM

NOTES:

- FOR SCHEMATIC DIAGRAM SEE FLUKE-744-1032.
- ASSEMBLE PER OSD 111.1.
- MARK ASSEMBLY REVISION IN SPACE PROVIDED USING PERMANENT MARKER.
- TEST PER 744-150.
- J6, J7, C316 AND TESTPOINTS ARE NOT INSTALLED.
- THE FOLLOWING COMPONENTS ARE NOT INSTALLED FOR FLUKE-741-4032 (PN 1607579) AND FLUKE-743-4032C (PN 1607593): C300, C301, C302, C304, C307, C308, C309, R300, R301, R302, R303, R304, R305, R306, R307, R308, R309, R312, R313, R314, R315, R316, R317, R318, R319, R320, R321, R322, CR300, CR301, Q200, Q201, U170, U172, U174.
- USE 28F004B (PN 107562) FOR U103 AND U104 ON THE FLUKE-741-4032 (PN 1607579) AND FLUKE-743-4032 (PN 1607593)
- FOR FLUKE-741-4032 (PN 1607579) ONLY: DO NOT INSTALL U101 AND U102.

PART NUMBER	DRAWING NOUN
202371	FLUKE-744-4032
1607579	FLUKE-741-4032
1607593	FLUKE-743-4032

PROPRIETARY NOTICE THIS DOCUMENT CONTAINS INFORMATION PROPRIETARY TO FLUKE CORPORATION AND SHALL NOT BE USED FOR ENGINEERING DESIGN, PROCUREMENT, OR MANUFACTURE IN WHOLE OR IN PART WITHOUT THE EXPRESS WRITTEN CONSENT OF THE FLUKE CORPORATION.	<b>FLUKE</b> FLUKE CORPORATION P.O. BOX 9090 EVERETT, WA 98206-9090		FSCM 89536
	PCA, MAIN		
UNLESS OTHERWISE SPECIFIED DIMENSIONS ARE IN INCHES TOLERANCES ARE: .XX = ± .02 .XXX = ± .010 ANGLES = ± 1/2°	PART NO. SEE TABLE	SIZE DWG NO. D FLUKE-744-4032	REV 121
SCALE NONE		SH 1 OF 1	

