

Thank you for purchasing this Factory Service Manual CD/DVD from servicemanuals4u.com.

Please check out our eBay auctions for more great deals on Factory Service Manuals:

servicemanuals4u

maintenance & service guide

Presario 1700 Series

Models: XL260, XL261, XL262, XL264, XL265, XL266, XL274, XL275, XL360, XL361, XL362, XL363, XL364, XL365, XL366, XL367, XL368, XL369, XL370, XL371, XL372, XL373, XL374, XL375, XL376, XL377, and XL378

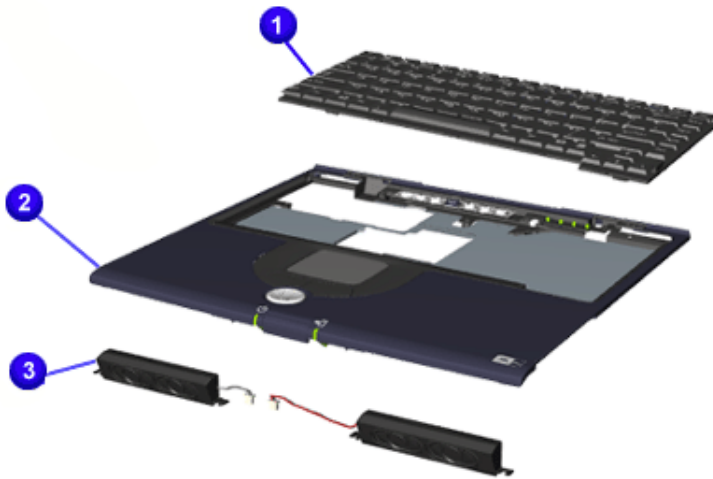
Parts Catalog

This section provides illustrations of the spare parts for Compaq Presario 1700XL Series Notebooks, and identifies the spare part ordering number and availability status of each item.

Illustrated Parts

The following illustrations are typical of the spare parts provided with the Compaq Presario 1700XL Series Notebooks.

Units



Spare Part Items	
❶	Keyboard
❷	Upper CPU Cover w/Palmrest and Touchpad
❸	Speakers
❹	Li-ion Battery (<i>not shown</i>)

To order parts, refer to [Part Numbers & Availability](#) later in this chapter.

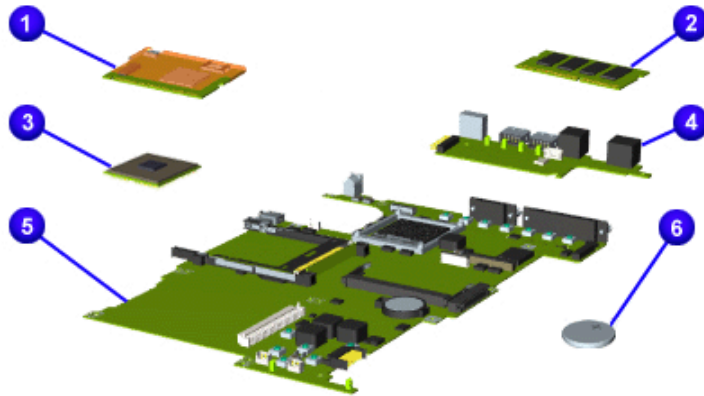
1.800.AT.COMPAQ

maintenance & service guide

Presario 1700 Series

Models: XL260, XL261, XL262, XL264, XL265, XL266, XL274, XL275, XL360, XL361, XL362, XL363, XL364, XL365, XL366, XL367, XL368, XL369, XL370, XL371, XL372, XL373, XL374, XL375, XL376, XL377, and XL378

Boards



Spare Part Items

- | | |
|---|--------------------------|
| ❶ | Modem or Modem/NIC Combo |
| ❷ | Memory |
| ❸ | Processor |
| ❹ | IO Connector Board |
| ❺ | System Board w/o Memory |
| ❻ | RTC Battery |

To order parts, refer to [Part Numbers & Availability](#) later in this chapter.

maintenance & service guide

Presario 1700 Series

Models: XL260, XL261, XL262, XL264, XL265, XL266, XL274, XL275, XL360, XL361, XL362, XL363, XL364, XL365, XL366, XL367, XL368, XL369, XL370, XL371, XL372, XL373, XL374, XL375, XL376, XL377, and XL378

Display Panel Assembly



Spare Part Item

12.1 Display Panel Assembly

13.3 Display Panel Assembly

14.1 Display Panel Assembly (*shown*)

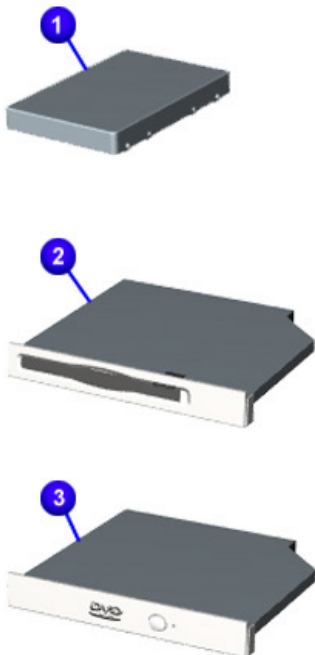
To order parts, refer to [Part Numbers & Availability](#) later in this chapter.

maintenance & service guide

Presario 1700 Series

Models: XL260, XL261, XL262, XL264, XL265, XL266, XL274, XL275, XL360, XL361, XL362, XL363, XL364, XL365, XL366, XL367, XL368, XL369, XL370, XL371, XL372, XL373, XL374, XL375, XL376, XL377, and XL378

Mass Storage Devices



Spare Part Items

- | | |
|---|--|
| ❶ | Hard Drive (6.0 - 32.0 GB) |
| ❷ | Diskette Drive (1.44 MB) |
| ❸ | DVD (6X or 8X) |
| ❹ | CD-ROM Drive (24X) (<i>not shown</i>) |
| ❺ | CD-RW Drive (8X/4X/24X) (<i>not shown</i>) |
| ❻ | LS-120 Drive (<i>not shown</i>) |

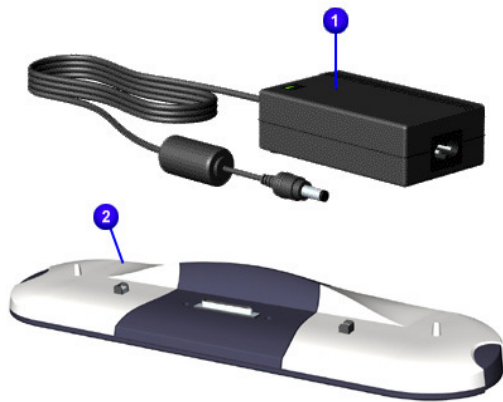
To order parts, refer to [Part Numbers & Availability](#) later in this chapter.

maintenance & service guide

Presario 1700 Series

Models: XL260, XL261, XL262, XL264, XL265, XL266, XL274, XL275, XL360, XL361, XL362, XL363, XL364, XL365, XL366, XL367, XL368, XL369, XL370, XL371, XL372, XL373, XL374, XL375, XL376, XL377, and XL378

Miscellaneous Hardware



Spare Part Items

- ❶ Power Adapter
- ❷ Port Replicator

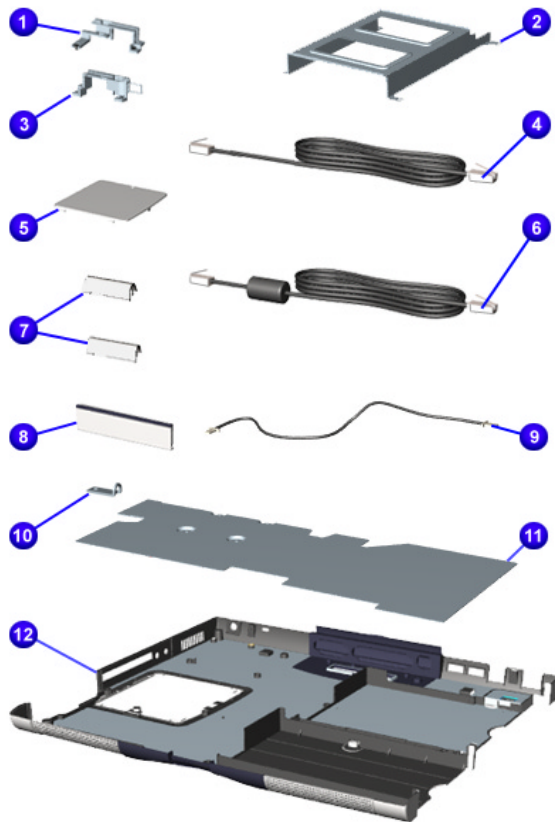
To order parts, refer to [Part Numbers & Availability](#) later in this chapter.

maintenance & service guide

Presario 1700 Series

Models: XL260, XL261, XL262, XL264, XL265, XL266, XL274, XL275, XL360, XL361, XL362, XL363, XL364, XL365, XL366, XL367, XL368, XL369, XL370, XL371, XL372, XL373, XL374, XL375, XL376, XL377, and XL378

Miscellaneous Hardware/Plastics Kit



Spare Part Items	
❶	Right Hinge
❷	HDD Guide
❸	Left Hinge
❹	Modem Cable
❺	SODIMM Door
❻	Modem Cable w/Ferrite
❼	Hinge Covers
❽	Battery Cover
❾	RJ45 Internal Modem Cable
❿	FPC Guide on Left Side Hinge
⓫	Heatspreader
⓬	Base
⓭	Door I/O Port Rubber (<i>not shown</i>)
⓮	Keyboard Retainer Cover (<i>not shown</i>)
⓯	Screw Kit, Misc. (<i>not shown</i>)
⓰	Rubber Foot (<i>not shown</i>)
⓱	Fan/Heatsink (<i>not shown</i>)
⓲	Blank Bay Case (<i>not shown</i>)

To order parts, refer to [Part Numbers & Availability](#) later in this chapter.

maintenance & service guide

Presario 1700 Series

Models: XL260, XL261, XL262, XL264, XL265, XL266, XL274, XL275, XL360, XL361, XL362, XL363, XL364, XL365, XL366, XL367, XL368, XL369, XL370, XL371, XL372, XL373, XL374, XL375, XL376, XL377, and XL378

Part Numbers & Availability

This section is a comprehensive list of the parts associated with the 1700XL Series Notebooks. It provides the part number, applicable model(s), and the availability of each item.

Build-to-Order Models

XL260 Model		XL261 Models	
Build-to-Order Items	Part No.	Build-to-Order Items	Part No.
Processor: Pentium III 500 MHz (256)	198696-001	Processor: Pentium III 500 MHz (256) Pentium III 650 MHz (256)	198696-001 202357-001
System Memory: 64 MB	198716-001	System Memory: 64 MB 96 MB	198716-001 NA
Display: 13.3 in.	198699-001	Display: 13.3 in. 14.1 in.	198699-001 198700-001
Optical Drive: DVD	198702-001	Optical Drive: DVD	198702-001
Hard Drive: 6.0 GB	198706-001	Hard Drive: 6.0 GB 12.0 GB	198706-001 198707-001
Battery: 3.2 Ahr Li-ion	191169-001	Battery: 3.2 Ahr Li-ion	191169-001

To find additional parts available for these models, refer to the [Alphabetical Spares Listing](#) later in this chapter.

maintenance & service guide

Presario 1700 Series

Models: XL260, XL261, XL262, XL264, XL265, XL266, XL274, XL275, XL360, XL361, XL362, XL363, XL364, XL365, XL366, XL367, XL368, XL369, XL370, XL371, XL372, XL373, XL374, XL375, XL376, XL377, and XL378

XL262 Model		XL264 Models	
Build-to-Order Items	Part No.	Build-to-Order Items	Part No.
Processor: Pentium III 600 MHz (256)	198697-001	Processor: Pentium III 500 MHz (256)	198696-001
System Memory: 64 MB	198716-001	System Memory: 64 GB	198716-001
Display: 14.1 in.	198700-001	Display: 13.3 in.	198699-001
Optical Drive: DVD	198702-001	Optical Drive: 24X	198701-001
Hard Drive: 6.0 GB	198706-001	Hard Drive: 6.0 GB	198706-001
Battery: 3.2 Ahr Li-ion	191169-001	Battery: 3.2 Ahr Li-ion	191169-001

XL265 Model		XL266 Models	
Build-to-Order Items	Part No.	Build-to-Order Items	Part No.
Processor: Pentium III 600 MHz (256)	198697-001	Processor: Pentium III 500 MHz (256)	210694-001
System Memory: 64 MB	198716-001	System Memory: 64 MB	198716-001
Display: 14.1 in.	198700-001	Display: 13.3 in.	198699-001
Optical Drive: DVD	198702-001	Optical Drive: 24X	198701-001
Hard Drive: 6.0 GB	198706-001	Hard Drive: 6.0 GB	198706-001
Battery: 3.2 Ahr Li-ion	191169-001	Battery: 3.2 Ahr Li-ion	191169-001

To find additional parts available for these models, refer to the [Alphabetical Spares Listing](#) later in this chapter.

maintenance & service guide

Presario 1700 Series

Models: XL260, XL261, XL262, XL264, XL265, XL266, XL274, XL275, XL360, XL361, XL362, XL363, XL364, XL365, XL366, XL367, XL368, XL369, XL370, XL371, XL372, XL373, XL374, XL375, XL376, XL377, and XL378

XL274 Model		XL275 Models	
Build-to-Order Items	Part No.	Build-to-Order Items	Part No.
Processor: Pentium III 600 MHz (256)	198697-001	Processor: Pentium III 650 MHz (256)	202357-001
System Memory: 128 MB	209874-001	System Memory: 128 MB	209874-001
Display: 14.1 in.	198700-001	Display: 14.1 in.	198700-001
Optical Drive: 24X	198701-001	Optical Drive: DVD	198702-001
Hard Drive: 12.0 GB	198707-001	Hard Drive: 6.0 GB	198706-001
Battery: 3.2 Ahr Li-ion	191169-001	Battery: 3.2 Ahr Li-ion	191169-001

XL360 Model		XL361 Models	
Build-to-Order Items	Part No.	Build-to-Order Items	Part No.
Processor: Pentium III 600 MHz (256)	198697-001	Processor: Pentium III 700 MHz (256)	207672-001
System Memory: 64 MB	198716-001	System Memory: 64 MB	198716-001
Display: 14.1 in.	198700-001	Display: 13.3 in.	198699-001
Optical Drive: DVD	198702-001	Optical Drive: 8X DVD	198702-001
Hard Drive: 10.0 GB	207665-001	Hard Drive: 15.0 GB	221126-001
Battery: 3.2 Ahr Li-ion	191169-001	Battery: 3.2 Ahr Li-ion	191169-001

To find additional parts available for these models, refer to the [Alphabetical Spares Listing](#) later in this chapter.

maintenance & service guide

Presario 1700 Series

Models: XL260, XL261, XL262, XL264, XL265, XL266, XL274, XL275, XL360, XL361, XL362, XL363, XL364, XL365, XL366, XL367, XL368, XL369, XL370, XL371, XL372, XL373, XL374, XL375, XL376, XL377, and XL378

XL362 Model		XL363	
Build-to-Order Items	Part No.	Build-to-Order Items	Part No.
Processor: Pentium III 700 MHz (256)	207672-001	Processor: Pentium III 650 MHz (256)	202357-001
System Memory: 128 MB	209874-001	System Memory: 64 MB	198716-001
Display: 14.1 in.	198700-001	Display: 13.3 in.	198699-001
Optical Drive: DVD	198702-001	Optical Drive: 24X	198701-001
Hard Drive: 15.0 GB	221126-001	Hard Drive: 15.0 GB	221126-001
Battery: 3.2 Ahr Li-ion	191169-001	Battery: 3.2 Ahr Li-ion	191169-001

XL364 Models		XL365 Model	
Build-to-Order Items	Part No.	Build-to-Order Items	Part No.
Processor: Pentium III 650 MHz (256) Pentium III 750 MHz (256)	202357-001 207673-001	Processor: Pentium III 700 MHz (256)	207672-001
System Memory: 64 MB 128 MB	198716-001 209874-001	System Memory: 128 MB	209874-001
Display: 13.3 in. 14.1 in.	198699-001 198700-001	Display: 14.1 in.	198700-001
Optical Drive: 8X DVD 24X CD-RW	198702-001 198701-001 198703-001	Optical Drive: DVD	198702-001
Hard Drive: 10.0 GB 20.0 GB	207665-001 207666-001	Hard Drive: 15.0 GB	221126-001
Battery: 3.2 Ahr Li-ion	191169-001	Battery: 3.2 Ahr Li-ion	191169-001

To find additional parts available for these models, refer to the [Alphabetical Spares Listing](#) later in this chapter.

maintenance & service guide

Presario 1700 Series

Models: XL260, XL261, XL262, XL264, XL265, XL266, XL274, XL275, XL360, XL361, XL362, XL363, XL364, XL365, XL366, XL367, XL368, XL369, XL370, XL371, XL372, XL373, XL374, XL375, XL376, XL377, and XL378

XL366 Models		XL367 Model	
Build-to-Order Items	Part No.	Build-to-Order Items	Part No.
Processor: Pentium III 600 MHz (256)	198697-001	Processor: Celeron 600 MHz (128)	198695-001
System Memory: 64 MB	198716-001	System Memory: 64 MB	198716-001
Display: 13.3 in.	198699-001	Display: 14.1 in.	198700-001
Optical Drive: 24X	198701-001	Optical Drive: 24X	198701-001
Hard Drive: 10.0 GB	207665-001	Hard Drive: 15.0 GB	221126-001
Battery: 3.2 Ahr Li-ion	191169-001	Battery: 3.2 Ahr Li-ion	191169-001

XL368 Models		XL369 Model	
Build-to-Order Items	Part No.	Build-to-Order Items	Part No.
Processor: Pentium III 600 MHz (256)	198697-001	Processor: Celeron 650 MHz (128)	207670-001
System Memory: 64 MB	198716-001	System Memory: 64 MB	198716-001
Display: 14.1 in.	198700-001	Display: 13.3 in.	198699-001
Optical Drive: 8X DVD	198702-001	Optical Drive: CD-RW	198703-001
Hard Drive: 15.0 GB	221126-001	Hard Drive: 10.0 GB	207665-001
Battery: 3.2 Ahr Li-ion	191169-001	Battery: 3.2 Ahr Li-ion	191169-001

To find additional parts available for these models, refer to the [Alphabetical Spares Listing](#) later in this chapter.

maintenance & service guide

Presario 1700 Series

Models: XL260, XL261, XL262, XL264, XL265, XL266, XL274, XL275, XL360, XL361, XL362, XL363, XL364, XL365, XL366, XL367, XL368, XL369, XL370, XL371, XL372, XL373, XL374, XL375, XL376, XL377, and XL378

XL370 Models		XL371 Model	
Build-to-Order Items	Part No.	Build-to-Order Items	Part No.
Processor: Pentium III 650 MHz (256)	202357-001	Processor: Pentium III 750 MHz (128)	207673-001
System Memory: 128 MB	198695-001	System Memory: 128 MB	209874-001
Display: 14.1 in.	198700-001	Display: 14.1 in.	198700-001
Optical Drive: 8X DVD	198702-001	Optical Drive: 8X DVD	198702-001
Hard Drive: 10.0 GB	207665-001	Hard Drive: 20.0 GB	207666-001
Battery: 3.2 Ahr Li-ion	191169-001	Battery: 3.2 Ahr Li-ion	191169-001

XL372 Models		XL373 Model	
Build-to-Order Items	Part No.	Build-to-Order Items	Part No.
Processor: Pentium III 650 MHz (256)	202357-001	Processor: Pentium III 750 MHz (128)	207673-001
System Memory: 64 MB	198716-001	System Memory: 64 MB	198716-001
Display: 13.3 in.	198699-001	Display: 14.1 in.	198700-001
Optical Drive: CD-RW	198703-001	Optical Drive: DVD	198702-001
Hard Drive: 10.0 GB	207665-001	Hard Drive: 20.0 GB	207666-001
Battery: 3.2 Ahr Li-ion	191169-001	Battery: 3.2 Ahr Li-ion	191169-001

To find additional parts available for these models, refer to the [Alphabetical Spares Listing](#) later in this chapter.

maintenance & service guide

Presario 1700 Series

Models: XL260, XL261, XL262, XL264, XL265, XL266, XL274, XL275, XL360, XL361, XL362, XL363, XL364, XL365, XL366, XL367, XL368, XL369, XL370, XL371, XL372, XL373, XL374, XL375, XL376, XL377, and XL378

XL374 Model		XL375 Models	
Build-to-Order Items	Part No.	Build-to-Order Items	Part No.
Processor: Pentium III 700 MHz (256)	207672-001	Processor: Pentium III 750 MHz (256)	207673-001
System Memory: 128 MB	198695-001	System Memory: 128 MB	198695-001
Display: 14.1 in.	198700-001	Display: 14.1 in.	198700-001
Optical Drive: 8X DVD	198702-001	Optical Drive: 8X DVD	198702-001
Hard Drive: 15.0 GB	221126-001	Hard Drive: 20.0 GB	207666-001
Battery: 3.2 Ahr Li-ion	191169-001	Battery: 3.2 Ahr Li-ion	191169-001

XL376 Model		XL377 Models	
Build-to-Order Items	Part No.	Build-to-Order Items	Part No.
Processor: Pentium III 750 MHz (256)	207673-001	Processor: Pentium III 700 MHz (256)	207672-001
System Memory: 128 MB	198695-001	System Memory: 64 MB	198716-001
Display: 14.1 in.	198700-001	Display: 14.1 in.	198700-001
Optical Drive: CD-RW	198703-001	Optical Drive: 8X DVD	198702-001
Hard Drive: 20.0 GB	207666-001	Hard Drive: 20.0 GB	207666-001
Battery: 3.2 Ahr Li-ion	191169-001	Battery: 3.2 Ahr Li-ion	191169-001

To find additional parts available for these models, refer to the [Alphabetical Spares Listing](#) later in this chapter.

maintenance & service guide

Presario 1700 Series

Models: XL260, XL261, XL262, XL264, XL265, XL266, XL274, XL275, XL360, XL361, XL362, XL363, XL364, XL365, XL366, XL367, XL368, XL369, XL370, XL371, XL372, XL373, XL374, XL375, XL376, XL377, and XL378

XL378 Model		XLTBD Model	
Build-to-Order Items	Part No.	Build-to-Order Items	Part No.
Processor: Celeron 700 MHz (128)	207671-001	Processor: Pentium III 700 MHz (256)	207672-001
System Memory: 64 MB	198716-001	System Memory: 128 MB	198695-001
Display: 13.3 in.	198699-001	Display: 14.1 in.	198700-001
Optical Drive: DVD	198702-001	Optical Drive: 8X DVD	198702-001
Hard Drive: 10.0 GB	207665-001	Hard Drive: 10.0 GB	207665-001
Battery: 3.2 Ahr Li-ion	191169-001	Battery: 3.2 Ahr Li-ion	191169-001

To find additional parts available for these models, refer to the [Alphabetical Spares Listing](#) later in this chapter.

Documentation and Software

Spare Part Items	
<i>Beyond Setup Guide</i>	Microsoft Word2000 CD Kit
Built for You Letter	Options Catalog
Compaq WinME Operating System Guide	Owner Registration Card-Win2K
Compaq.Net Rebate Card	Personal Audio Player Card
Corel Word Perfect Office 2000 CD Kit	Quick Restore Recovery CD Kit
DVD-ROM Driver Card	Return Kit
Easy Setup Poster	<i>Safety & Comfort Guide</i>
Emergency Recovery CD Kit	Warranty
Microsoft Office 2000 Professional CD Kit	Win2000 Driver CD Kit
Microsoft WinME Manual Kit	

maintenance & service guide

Presario 1700 Series

Models: XL260, XL261, XL262, XL264, XL265, XL266, XL274, XL275, XL360, XL361, XL362, XL363, XL364, XL365, XL366, XL367, XL368, XL369, XL370, XL371, XL372, XL373, XL374, XL375, XL376, XL377, and XL378

Alphabetical Spares Listing

In this section, all spare parts associated with the 1700XL models are listed alphabetically by name.

[A](#) [B](#) [C](#) [D](#) [E](#) [F](#) [G](#) [H](#) [I](#) [J](#) [K](#) [L](#) [M](#) [N](#) [O](#) [P](#) [Q](#) [R](#) [S](#) [T](#) [U](#) [V](#) [W](#) [X](#) [Y](#) [Z](#)

Spare Part Description	Spare P/N	Applicable Models	Availability
AC Adapter (60 W 2-Wire)	198713-001	All	
AC Adapter (60 W 3-Wire)	198714-001	All	
AC Power Cord (AU 3-Wire)	198723-011	All	
AC Power Cord (AU 2-Wire)	174120-011	All	
AC Power Cord (CH 3-Wire)	198723-AA1	All, CTO	after 9/25/00
AC Power Cord (CH 2-Wire)	174120-AA1	All	
AC Power Cord (INT'L 3-Wire)	198723-B31	All	
AC Power Cord (INT'L 2-Wire)	174120-002	All	
AC Power Cord (IT 3-Wire)	198723-061		
AC Power Cord (JP 3-Wire)	198723-291		
AC Power Cord (KR 3-Wire)	198723-AD1	All	
AC Power Cord (SE 3-Wire)	198723-101	CTO	after 9/25/00
AC Power Cord (SW 2-Wire)	174120-115	CTO	after 9/25/00
AC Power Cord (SW 3-Wire)	198723-BG1	CTO	after 9/25/00
AC Power Cord (UK 2-Wire)	174120-031	CTO	after 9/25/00
AC Power Cord (UK 3-Wire)	198723-031	CTO	after 9/25/00
AC Power Cord (US 3-Wire)	174120-001	All	
AC Power Cord (TW 3-Wire)	198723-AB1	All	after 9/25/00
Base	198691-001	All	after 9/3/00
Battery Pack (3.2 Ahr, Li-ION)	191169-001	All	
Battery Pack (3.6 Ahr, Li-ION)	198709-001	CTO	after 9/17/00
<i>Beyond Setup Guide</i>	183237-002	All	
Blank Bay Case	212284-001	All	after 9/3/00
Built for You Letter	387076-003	CTO	after 9/25/00
CD-ROM Drive 24X	198701-001	264, 266, 364, 366, 367, CTO	after 9/17/00

maintenance & service guide

Presario 1700 Series

Models: XL260, XL261, XL262, XL264, XL265, XL266, XL274, XL275, XL360, XL361, XL362, XL363, XL364, XL365, XL366, XL367, XL368, XL369, XL370, XL371, XL372, XL373, XL374, XL375, XL376, XL377, and XL378

Spare Part Description	Spare P/N	Applicable Models	Availability
CD-ROM, 24X DMA	221761-001	CTO	after 9/25/00
CD-RW Drive (8X/24X)	198703-001	369, 372, 364, CTO	after 1/14/01
CD-ROM, CD-RW	198703-001	369, 372, 364, CTO	until 1/7/01
<i>Compaq WinME Operating System Guide</i>	181272-001	All	
Compaq.Net Rebate Card	210619-002	CTO	after 9/25/00
Corel Word Perfect Office 2000 CD Kit	154906-001	All	
CPU Cover w/Power Switch	198692-001	All	
Diskette Drive (1.44 MB)	198704-001	All, CTO	after 9/17/00
Display Panel (12.1 in. SVGA)	198698-001	CTO	after 9/3/00
Display Panel (13.3 in.)	198699-001	260, 264, 266, 361, 364, 366, 367, 369, 372, CTO	after 9/3/00
Display Panel (14.1)	198700-001	261, 262, 265, 274, 275, 360, 362, 364, 365, 367, 368, 370, 371, 374, 375, CTO	after 9/3/00
DVD/CD-RW Combo Drive	NA	CTO	after 1/14/00
DVD Drive (8X)	198702-001	CTO	after 9/25/00
DVD-ROM Driver Card, RTF	201706-003	All	
Easy Setup Poster	183237-002	All	

maintenance & service guide

Presario 1700 Series

Models: XL260, XL261, XL262, XL264, XL265, XL266, XL274, XL275, XL360, XL361, XL362, XL363, XL364, XL365, XL366, XL367, XL368, XL369, XL370, XL371, XL372, XL373, XL374, XL375, XL376, XL377, and XL378

Spare Part Description	Spare P/N	Applicable Models	Availability
Emergency Recovery CD	(US/PR) 169298-001	All	
	(MEX) 169298-161		
	(APD) 169298-371		
	(PRC) 169298-AA1		
	(KOR) 169298-AD1		
	(AUS) 169298-371		
	(JP) 169298-291		
	(UK) 169298-031		
	(FR) 169298-051		
	(IT)169298-061		
(BEL) 169298-AK1			
Fan/Heatsink	198712-001	All	
Fan w/TouchPad	219810-001	All	
Hard Drive (6.0 GB)	198706-001	260, 262, 264, 265, 266, 275, CTO	after 9/17/00
Hard Drive (10.0 GB)	207665-001	261,266,274, 366, 364, 369, 372, 360, 370, CTO	after 9/17/00
Hard Drive (15.0 GB)	221126-001	374, 361, 362, 367, 368, 365, CTO	after 9/17/00
Hard Drive (20.0 GB)	207666-001	364, 371, 375, CTO	after 9/17/00
Hard Drive (30.0 GB)	207667-001	CTO	not available
Hard Drive (32.0 GB 5400 RPM)	207668-001	CTO	after 10/15/00
Heat Sink (Heatspreader)	198712-001	All	after 9/25/00
IO Connector Board	198690-001	All	
Keyboard (US)	198719-001	260, 261, 262, 264, 265, 275, 360, 375	
Keyboard (UK)	198719-031		
Keyboard (INT'L)	198719-B31	261, 264	
Keyboard (TW)	198719-AB1	261	
Keyboard (LA)	198719-161	266, 274	

maintenance & service guide

Presario 1700 Series

Models: XL260, XL261, XL262, XL264, XL265, XL266, XL274, XL275, XL360, XL361, XL362, XL363, XL364, XL365, XL366, XL367, XL368, XL369, XL370, XL371, XL372, XL373, XL374, XL375, XL376, XL377, and XL378

Spare Part Description	Spare P/N	Applicable Models	Availability
Keyboard (KR)	198719-AD1	261, 264	
Keyboard (KR)	221894-AD1		
Keyboard (JP)	198719-291		
Keyboard (BE)	198719-181		
Keyboard (DK)	198719-081		
Keyboard (FC)	198719-121		
Keyboard (GR)	198719-041		
Keyboard (IT)	198719-061		
Keyboard (NO)	198719-091		
Keyboard (SE)	198719-101		
Keyboard (SW)	198719-111		
Keyboard (FR)	198719-051		
Keyboard (NL)	198719-331		
Keyboard (TH)	198719-281		
LS-120 Drive (FutureBay)	198705-001	CTO	after 10/15/00
Manuals: Beyond Setup Guide , Safety and Comfort Guide , Compaq WinME Operating System Guide			
Memory (32 MB)	207678-001	CTO	after 9/25/00
Memory (64 MB)	198716-001	All	after 9/3/00
Memory (128 MB)	209874-001	362, 364, 365, 370, 371, 374, 375, CTO	after 9/3/00
Memory (256 MB)	207676-001	CTO	after 9/3/00
Microsoft Office 2000 Professional CD Kit	NA	CTO	after 9/25/00
Microsoft Office 2000 SBE CD Kit	NA	CTO	after 9/25/00
Microsoft Word 2000 CD Kit	147234-001	All	
<i>Microsoft Millennium Guide</i>	180309-001	All	
Miscellaneous Hardware/Plastics Kit	198693-001	All	
Miscellaneous Screw Kit	198711-001	All	
Modem 56K Mini 3 INTL, EMEA	198720-B31		
Modem 56K Mini 3 INTL, AUS/NZ	198720-011		
Modem 56K Mini 3 US, APD, LA, Canada	198720-001		

maintenance & service guide

Presario 1700 Series

Models: XL260, XL261, XL262, XL264, XL265, XL266, XL274, XL275, XL360, XL361, XL362, XL363, XL364, XL365, XL366, XL367, XL368, XL369, XL370, XL371, XL372, XL373, XL374, XL375, XL376, XL377, and XL378

Spare Part Description	Spare P/N	Applicable Models	Availability
Modem 56K/NIC Combo, US	198721-001	366, 374	
Modem 56K Mini PCI 3III AU	221127-011	360	
Modem 56K Mini PCI 3III	221127-001	362, 375, 370	
Modem 56K Mini PCI 3III EU	221127-021	361, 364, 369, 372, 371, 365	
Mouse, CPQ USB			
Options Catalog	166299-003	All	
Owner Registration Card—Win2K	141572-005	CTO	after 9/25/00
Palmrest Cover w/TouchPad	198692-001	All	
Personal Audio Player Card	216792-001	All	
Port Replicator, See QuikDock			
Processor (550 MHz PIII 256K)	198694-001	266	
Processor (600 MHz Celeron 128K)	198695-001	274, 367, CTO	after 9/17/00
Processor (600 MHz PIII 256K)	198697-001	262, 264, 265, 266, 274, 360, 368, 366, CTO	after 9/17/00 until 1/7/01
Processor (650 MHz Celeron 128K)	207670-001	369	
Processor (650 MHz PIII 256K)	202357-001	261, 275, 364, 370, 372	
Processor (700 MHz PIII 256K)	207672-001	361, 362, 365, 367, 374, CTO	after 9/17/00
Processor (700 MHz Celeron 128K)	207671-001	378	after 9/17/00
Processor (750 MHz PIII 256K)	207673-001	369, 364, 371, 375, CTO	after 9/17/00 until 1/7/01
Processor (800 MHz PIII 256K)	207674-001	CTO	after 9/24/00
Processor (850 MHz PIII 256K)	207675-001	CTO	after 9/24/00

maintenance & service guide

Presario 1700 Series

Models: XL260, XL261, XL262, XL264, XL265, XL266, XL274, XL275, XL360, XL361, XL362, XL363, XL364, XL365, XL366, XL367, XL368, XL369, XL370, XL371, XL372, XL373, XL374, XL375, XL376, XL377, and XL378

Spare Part Description	Spare P/N	Applicable Models	Availability
Quick Restore CD 1	(US/PR) 169298-001	All	
	(MEX) 169298-161		
	(APD) 169298-371		
	(PRC) 169298-AA1		
	(KOR) 169298-AD1		
	(AUS) 169298-371		
	(JP) 169298-291		
	(UK) 169298-031		
	(FR) 169298-051		
	(IT) 169298-061		
(BEL) 169298-AK1			
QuikDock (Port Replicator)	198717-001	All	
RTC Battery	198718-001	All	
Recovery CD Kit	157296-003	All	
<i>Safety and Comfort Guide</i>	191432-001	All	
Speakers	198710-001	All	
Sub Board	198690-001	All	
System Board w/o Memory	198689-001	260, 261, 262, 264, 265, 266, 274, 275	
System IO Board w/o Memory	219809-001	360, 361, 362, 364, 365, 366, 367, 368, 369, 370, 371, 372, 374, 375,	
Warranty	170835-004	All	
<i>WinME Operating System Guide</i>	181272-001	All	
Win2k Driver CD Kit	191298-003	CTO	after 9/25/00

To see illustrations of each part, and a list of items contained in each miscellaneous parts kit, refer to [Illustrated Parts](#) earlier in this chapter.