

FIELD REPLACEABLE UNIT DOCUMENTATION

Satellite™ 2800 Series

BATTERY PACK REMOVAL



1. Turn the computer upside down as shown.
2. Slide the **battery release lever** in the direction of the arrow.
3. Slide the **battery pack** to the right and lift it out.

OPTIONAL PCMCIA CARD REMOVAL



1. Slide the **PC Card lock** to unlock position.
2. Push the **eject button** to pop it out.
3. Press the **eject button** and remove the **PC card**.

NOTE: Before removing any PCMCIA device, make sure it is "STOPPED" in the PC Card Manager.

HDD REMOVAL



1. Turn the computer upside down.
2. Remove **one M2.5x16 black screw** securing **HDD cover** and lift out the cover.



3. Slide the **HDD assembly** in the direction of the arrow to disconnect from PJ4 on the system board.
4. Lift the **HDD assembly** out of the HDD bay.

TOSHIBA

Tough Enough for Today's World

FIELD REPLACEABLE UNIT DOCUMENTATION

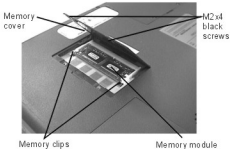
Satellite™ 2800 Series

HDD REMOVAL



6. Remove **four M3x4 brass flat head screws** securing the **HDD bracket** to the drive and lift off the bracket.

EXPANSION MEMORY REMOVAL

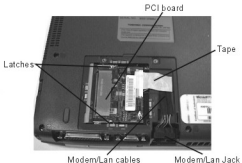


1. Turn the computer upside down.
2. Remove **two M2x4 black flat head screws** and remove the **memory cover**.
3. Spread the **memory clips** and pull the **memory module** out of the connector on a 30 degree angle.

MODEM/LAN REMOVAL



1. Turn the computer upside down.
2. Remove **two M2.5x4 flat head screws** securing the Modem/Lan cover.
3. Lift up the front side of the cover to release the two latches securing it.

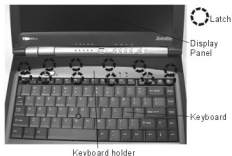


4. Remove the **tape** securing the cables.
5. Disconnect the **Modem/Lan cables** from the mini PCI board.
6. Remove the **Modem/Lan Jack**.
7. Spread the **latches** securing the mini PCI board and pull the board out of the connector on a 30 degree angle.

FIELD REPLACEABLE UNIT DOCUMENTATION

Satellite™ 2800 Series

KEYBOARD REMOVAL



1. Open the **display panel**.
2. Using the case separator, unlatch the **keyboard holder** at the top of the keyboard.



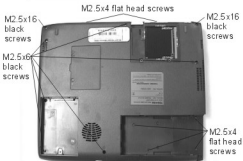
3. Remove **two M2.5x4 black flat head screws** securing the keyboard.

KEYBOARD REMOVAL



4. Lift out the **keyboard** and set it as shown above.
5. Disconnect the **keyboard cable** from **PJ7** on the system board and lift out the keyboard.

TOP COVER REMOVAL



1. Turn the computer upside down and remove the following fourteen screws:
 - **2 M2.5x4 black flat head screws** at the back
 - **2 M2.5x16 black screws** from the underside
 - **4 M2.5x4 black flat head screws** from battery bay
 - **6 M2.5x6 black screws** from the underside

TOSHIBA
Tough Enough for Today's World

FIELD REPLACEABLE UNIT DOCUMENTATION

Satellite™ 2800 Series

TOP COVER REMOVAL



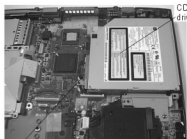
M2.5x6 black screws

- Turn the computer right side up and open the display panel.
- Disconnect the following four cables:
 - LCD/FL cable from PJ2
 - LED/Button cable from PJ5
 - IPS switch cable from PJ10
 - Speaker cable from PJ16
- Remove four M2.5x6 black screws and two M2x8 brass screws securing the top cover.

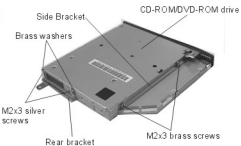


- Lift up the back side of the **top cover** and **display assembly** to release three latches on the front side of the top cover and remove the top cover and display assembly.

CD-ROM/DVD ROM DRIVE REMOVAL



- Slide the **CD/DVD-ROM drive assembly** to the right to disconnect from **PJ6** on the system board.
- Lift out the drive assembly.



- Remove two **M2x3 silver screws** securing the rear bracket. Remove the **rear bracket** and the **two brass washers**.
- Remove two **M2x3 silver screws** securing the side bracket of the DVD-ROM drive.

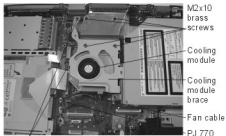
TOSHIBA

Tough Enough for Today's World

FIELD REPLACEABLE UNIT DOCUMENTATION

Satellite™ 2800 Series

COOLING MODULE REMOVAL

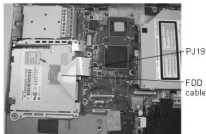


M2.5x5 brass screws

1. Remove **two M2.5x5 brass screws** securing the cooling module brace and lift out the brace.
2. Disconnect the **fan cable** from **PJ770** on the system board.
3. Remove **four M2x10 brass screws** securing the cooling module and lift it out.
3. Remove the cooling seal on the CPU and dispose it.

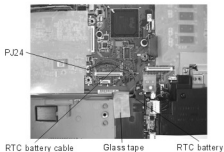
NOTE: Always order a new CPU seal.

FDD REMOVAL

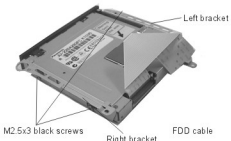


1. Disconnect the **FDD cable** from **PJ19** on the system board.
2. Lift out the FDD.

RTC REMOVAL



1. Disconnect the **RTC battery cable** from **PJ24** on the system board.
2. Remove the **glass tape** securing the RTC battery.
3. Lift the **RTC battery** out of the slot.

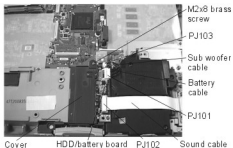


3. Remove **four M2.5x3 black screws** securing the right and left metal brackets.
4. Disconnect the **FDD cable** from the FDD.

FIELD REPLACEABLE UNIT DOCUMENTATION

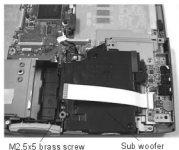
Satellite™ 2800 Series

BATTERY BOARD REMOVAL



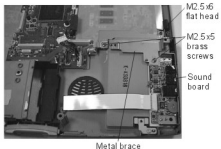
1. Remove **one M2x8 brass screw** securing the plastic cover and lift the cover out.
2. Disconnect the **sound cable** from **PJ102** on the battery board.
3. Lift up the back side of the **battery board** to disconnect it from **PJ30** on the system board.
4. Disconnect the **battery board cable** and **sub woofer cable** from **PJ101** and **PJ103** on the battery board.

SUB WOOFER REMOVAL

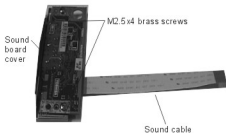


1. Remove **one M2.5x5 brass screw** securing the sub woofer.
2. Fold back the sound cable and lift out the **sub woofer**.

SOUND BOARD REMOVAL



1. Remove **two M2.5x5 brass screws** and **one M2.5x6 black flat head screw** securing the metal brace.
2. Lift out the **metal brace**.
3. Lift out the **sound board**.

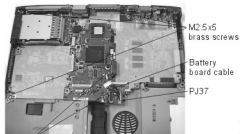


4. Disconnect the **sound cable** from **PJ34** on the sound board.
5. Remove **two M2.5x4 brass screws** securing the sound board cover and remove the **cover**.

FIELD REPLACEABLE UNIT DOCUMENTATION

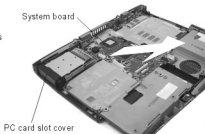
Satellite™ 2800 Series

SYSTEM BOARD REMOVAL



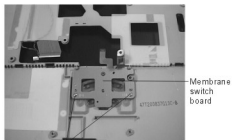
Stud screws

1. Disconnect the **battery board cable** from **PJ37** on the system board.
2. Remove **three M2.5 brass screws** and **two stud screws** securing the system board.



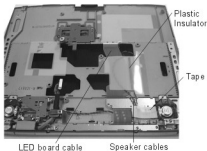
3. Lift up the front side of the **system board** and pull the board out.
4. Remove the **PC Card slot cover** from the system board.

MEMBRANE SWITCH REMOVAL



1. Remove **two M2x4 brass screws** securing the membrane switch board.
2. Lift out the **membrane switch**.

LED/BUTTON BOARD REMOVAL

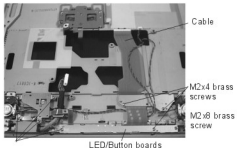


1. Lift the strip of **glass tape** covering the speaker cables.
2. Fold back the **plastic insulator** covering the LED/button cable.

FIELD REPLACEABLE UNIT DOCUMENTATION

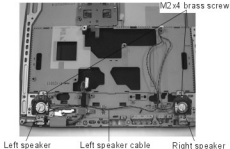
Satellite™ 2800 Series

LED/BUTTON BOARD REMOVAL



1. Remove **seven M2x4 screws** and **one M2x8 screw** securing the LED/Button boards.
2. Slide the LED/Button board to the left and lift it out.

SPEAKERS REMOVAL



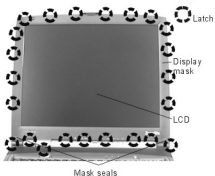
1. Pull out the **left speaker cable** under the LCD/FL cable.
2. Remove **one M2x4 brass screw** securing each speaker brace.
3. Lift off the **speaker braces**.
4. Lift out the speaker assemblies.

TOSHIBA

Tough Enough for Today's World

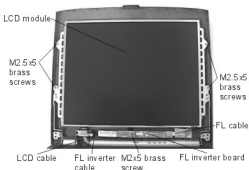
Satellite™ 2800 Series

13.3 TFT DISPLAY MASK REMOVAL



1. Remove **two mask seals** at the bottom corners of the display assembly.
2. Remove **two M2.5x5 brass screws** securing the display mask.
3. There are **23 latches** securing the **display mask**. Carefully insert your fingers between the **display mask** and the **LCD module** and pry open the latches starting from the **top six latches**, to the **five latches on the right and left sides**, ending with the **six bottom latches**.

FL INVERTER AND LCD REMOVAL



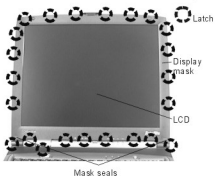
1. Remove **one M2x5 brass screw** securing FL inverter board.
2. Carefully lift up the **FL inverter board** and disconnect the **FL inverter cable** from **CN1** and the **FL cable** from **CN2**.
3. Remove **four M2.5X5 brass screws** securing the **LCD module**.
4. Carefully rotate the **LCD module** from right to left of the LCD cover.
5. Disconnect the **LCD cable** from the LCD module and remove the **LCD** from the computer.

TOSHIBA

Tough Enough for Today's World

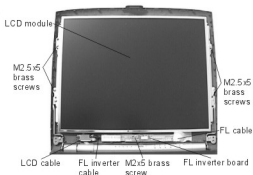
Satellite™ 2800 Series

14.1 TFT DISPLAY MASK REMOVAL



1. Remove **two mask seals** at the bottom corners of the display assembly.
2. Remove **two M2.5x5 brass screws**.
3. There are **23 latches** securing the **display mask**. Carefully insert your fingers between the **display mask** and the **LCD module** and pry open the latches starting from the **top six latches**, to the **five latches on the right and left sides**, ending with the **six bottom latches**.

FL INVERTER AND LCD REMOVAL



1. Remove **one M2.5x5 brass screw** securing FL inverter board.
2. Carefully lift up the **FL inverter board** and disconnect the **FL inverter cable** from **CN1** and the **FL cable** from **CN2**.
3. Remove **four M2.5X5 brass screws** securing the **LCD module**.
4. Carefully rotate the **LCD module** from right to left of the LCD cover.
5. Disconnect the **LCD cable** from the LCD module and remove the **LCD** from the computer.

TOSHIBA

Tough Enough for Today's World