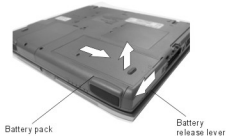


FIELD REPLACEABLE UNIT DOCUMENTATION

Satellite Pro™ 4600 Series

BATTERY PACK REMOVAL



1. Turn the computer upside down as shown.
2. Slide the **battery release lever** in the direction of the arrow.
3. Slide the **battery pack** to the right and lift it out.

OPTIONAL PCMCIA CARD REMOVAL



1. Pull out the **eject button** of the PC card to be removed.
2. Press the **eject button** and remove the **PC card**.

NOTE: Before removing any PCMCIA device, make sure it is "STOPPED" in the PC Card Manager.

HDD REMOVAL



1. Turn the computer upside down.
2. Remove **two M2.5x4 black screw** securing HDD slot cover and pull out the **cover**.



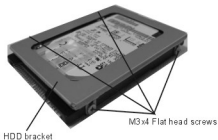
3. Grasp the **HDD bracket handle** and pull to disconnect the HDD assembly.
4. Lift the **HDD assembly** out of the HDD bay.

TOSHIBA
Tough Enough for Today's World

FIELD REPLACEABLE UNIT DOCUMENTATION

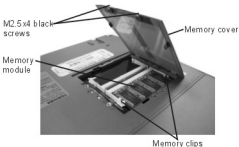
Satellite Pro™ 4600 Series

HDD REMOVAL



5. Remove **four M3x4 flat head screws** securing the HDD bracket to the drive.

MEMORY MODULE REMOVAL



1. Turn the computer upside down.
2. Remove **two M2.5x4 black screws** and remove the **memory cover**.
3. Push the **memory clips** outward and pull the **memory module** out of the connector on a 30 degree angle.

MINI PCI CARD REMOVAL



1. Turn the computer upside down.
2. Remove **two M2.5x4 black screws** securing the Mini PCI slot cover.



3. Push the **Mini PCI slot clips** outward and pull the **Mini PCI card** out of the connector on a 30 degree angle.

TOSHIBA

Tough Enough for Today's World

FIELD REPLACEABLE UNIT DOCUMENTATION

Satellite Pro™ 4600 Series

MODEM REMOVAL



Modem slot cover M2.5x4 black screw

1. Remove **one M2.5x4 black screw** securing the modem slot cover.
2. Insert your finger nail or the case separator into the notched side of the cover and lift up to release the two latches securing the left side of the modem slot cover.

M2x4 brass screws

RJ11 Jack



Modem

3. Remove the **glass tape** securing the RJ-11 jack cable.
4. Remove **two M2x4 brass screws** securing the modem board.
5. Lift up the **modem board** to disconnect it from the system board.
6. Remove the **RJ-11 jack** from the modem board.

KEYBOARD REMOVAL

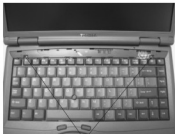


Keyboard holder



Latch

1. Open the display panel.
2. Remove the **Keyboard holder** at the top of the keyboard.



M2.5x4 black screw

3. Remove **two M2.5x4 black screws** securing the keyboard.

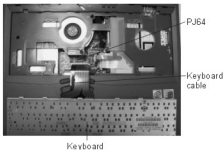
TOSHIBA

Tough Enough for Today's World

FIELD REPLACEABLE UNIT DOCUMENTATION

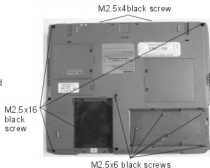
Satellite Pro™ 4600 Series

KEYBOARD REMOVAL



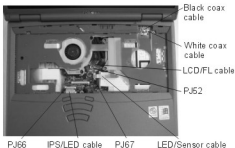
4. Lift out the **keyboard** and set it on the palm rest.
5. Disconnect the **keyboard cable** from **PJ64** on the system board and lift out the keyboard.

TOP COVER REMOVAL

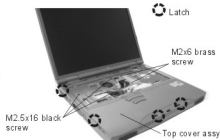


1. Turn the computer upside down and remove the following thirteen screws:
 - 5 **M2.5x16 black screws**
 - 6 **M2.5x6 black screws**
 - 2 **M2.5x4 black screws**

TOP COVER REMOVAL



2. Turn the computer right side up and open the LCD panel.
3. Disconnect the following cables:
 - **IPS/LED cable** from **PJ66**
 - **LED/Sensor cable** from **PJ67**
 - **LCD/FL cable** from **PJ52**
 - **Black/White coaxial cable** from **PJ10** and **PJ14**



4. Remove **three M2.5x16 black screws** and two **M2x6 brass screws** securing the top cover assembly.
5. Lift up the back side of the **top cover assembly** to release the four latches securing the top cover assembly.

FIELD REPLACEABLE UNIT DOCUMENTATION

Satellite Pro™ 4600 Series

FDD REMOVAL



- PJ63 M2.5x6 brass screw FDD assy
1. Disconnect the **FDD cable** from **PJ63** on the system board.
 2. Remove **two M2.5x6 brass screws** securing the FDD assembly.
 3. Lift out the **FDD assembly**.

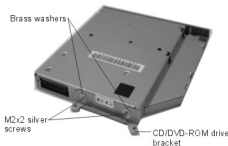


4. Remove **four M2.5x3 black screws** securing the **FDD** to the **FDD case** and separate the FDD from the case.
5. Disconnect the **FDD cable** from the FDD.

CD-ROM/DVD ROM DRIVE REMOVAL



1. Slide the **CD/DVD-ROM drive** to the right to disconnect it from **PJ58** on the system board.

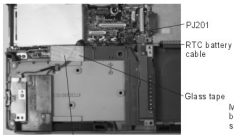


2. Remove **two M2x2 silver screws** and **two brass washers** securing the **CD/DVD ROM drive bracket**.

FIELD REPLACEABLE UNIT DOCUMENTATION

Satellite Pro™ 4600 Series

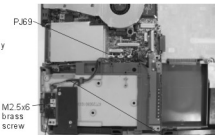
RTC REMOVAL



RTC battery

1. Remove the **glass tape** securing the RTC battery.
2. Disconnect the **RTC battery cable** from **PJ201** on the system board.
3. Lift the **RTC battery** out of the slot.

WIRELESS SWITCH/LED BOARD REMOVAL

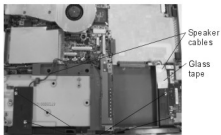


Wireless switch/LED board

Wireless switch/LED board cable

1. Remove **one M2.5x6 brass screw** securing the wireless switch/LED board.
2. Disconnect the **wireless switch/LED board cable** from **PJ69** on the system board.
3. Lift out the **wireless switch/LED board** and remove wireless switch/LED board cable from the board.

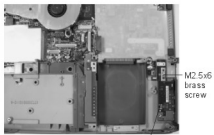
SPEAKERS REMOVAL



M2.5x6 flat head screws

1. Remove **two M2.5x6 flat head screws** securing each speaker.
2. Remove the **tape** securing the speaker cables.
3. Remove the **speaker cables** from **PJ702** and **PJ703** and lift out both speakers.

SOUND/FIR BOARD REMOVAL



Sound/FIR board

1. Remove **one M2.5x6 brass screw** securing the sound FIR board.
2. Lift up the back side of the **sound/FIR board** to disconnect it from **PJ701** on the system board.

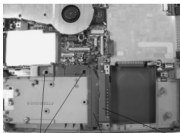
TOSHIBA

Tough Enough for Today's World

FIELD REPLACEABLE UNIT DOCUMENTATION

Satellite Pro™ 4600 Series

BATTERY BOARD REMOVAL



M2.5x6 brass screws Plastic brace Battery board

1. Remove **two M2.5x6 brass screws** securing the plastic brace.
2. Disconnect the **battery board cable** from **PJ810** on the system board.
3. Lift out the **battery board** assembly.
4. Remove the **battery board** from the plastic brace.

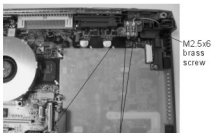
COOLING MODULE REMOVAL



M2x10 brass screws Cooling module

1. Disconnect the **fan cable** from **PJ202** on the system board.
2. Remove **four M2x10** and **one M2.5x8 brass screws** securing the cooling module to the system board.
3. Lift out the **cooling module**.

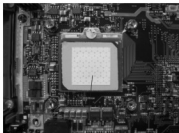
ANTENNA INTERFACE BOARD REMOVAL



Antenna interface board Coaxial cables

1. Disconnect the **two coaxial cables** from **PJ11** and **PJ13** on the antenna interface board.
2. Remove **one M2.5x6 brass screw** securing the antenna interface board.
3. Lift out the **antenna interface board**.

CPU BOARD REMOVAL

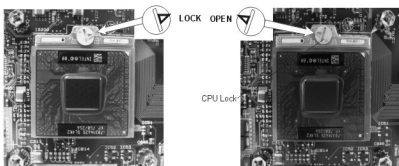


Cool sheet

1. Remove the **cool sheet** on top of the CPU.

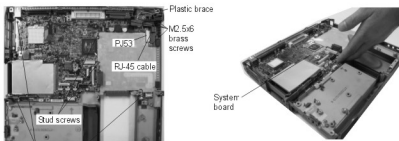
Satellite Pro™ 4600 Series

CPU BOARD REMOVAL



- Using a flat head screwdriver, rotate the **CPU lock** 180 degree counter clockwise, to the **OPEN** position and lift the CPU out of the socket.

SYSTEM BOARD REMOVAL



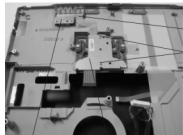
- Remove **four M2.5x6 brass screws** securing the plastic brace.
- Lift out the **plastic brace** and the two coaxial cables.
- Disconnect the **RJ-45 cable** from PJ53 on the system board and remove it.
- Remove **three M2.5x4 black screws** and **two stud screws** securing the system board.

- Lift up the **system board** from the front side as shown above.

FIELD REPLACEABLE UNIT DOCUMENTATION

Satellite Pro™ 4600 Series

IPS/LED BOARD REMOVAL

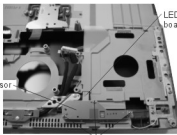


LED lens
LED board
M2x4 brass screws

LED board bracket IPS board

1. Remove **two M2x4 brass screws** securing the IPS/LED board.
2. Slide the **LED board bracket** out of the LED lens and lift out the **IPS/LED board**.

LED/SENSOR BOARD REMOVAL



LED sensor board

LED/Sensor board cable

M2x4 brass screws

1. Remove **three M2x4 brass screws** securing the LED/Sensor board.
2. Slide the **LED/Sensor board cable** out of the top cover and lift out the LED/Sensor board.

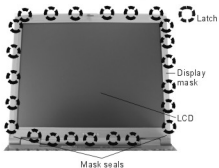
TOSHIBA

Tough Enough for Today's World

FIELD REPLACEABLE UNIT DOCUMENTATION

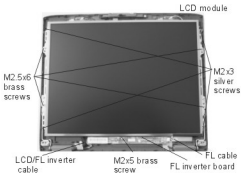
Satellite™ 4600 Series

14" DISPLAY MASK REMOVAL



1. Remove **two mask seals** at the bottom corners of the display assembly.
2. Remove **two M2.5x6 brass screws**.
3. There are **22 latches** securing the **display mask**. Carefully insert your fingers between the **display mask** and the **LCD module** and pry open the latches starting from the **top six latches**, to the **five latches on the right and left sides**, ending with the **six bottom latches**.

FL INVERTER AND 14" LCD REMOVAL

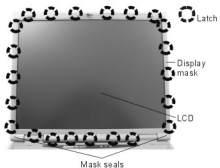


1. Remove **one M2x5 brass screw** securing FL inverter board.
2. Carefully lift up the **FL inverter board** and disconnect the **LCD/FL inverter cable** from **CN1** and the **FL cable** from **CN2**.
3. Remove **four M2.5x6 brass screws** securing the LCD bracket to the LCD cover.
4. Carefully rotate the **LCD module** from right to left of the LCD cover.
5. Disconnect the **LCD cable** from the LCD module and remove the **LCD** from the computer.
6. Remove **four M2x2 silver screws** securing the left and right LCD brackets to the LCD and separate the brackets.

FIELD REPLACEABLE UNIT DOCUMENTATION

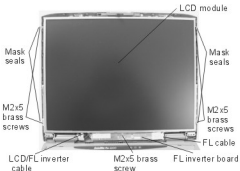
Satellite™ 4600 Series

15" DISPLAY MASK REMOVAL



1. Remove **two mask seals** at the bottom corners of the display assembly.
2. Remove **two M2.5x6 brass screws**.
3. There are **22 latches** securing the **display mask**. Carefully insert your fingers between the **display mask** and the **LCD module** and pry open the latches starting from the **top six latches**, to the **five latches on the right and left sides**, ending with the **six bottom latches**.

FL INVERTER AND 15" LCD REMOVAL



1. Remove **one M2x5 brass screw** securing FL inverter board.
2. Carefully lift up the **FL inverter board** and disconnect the **LCD/FL inverter cable** from **CN1** and the **FL cable** from **CN2**.
3. Remove **four mask seals** to expose four screws securing the **LCD module**.
4. Remove **four M2X5 brass screws** securing the **LCD module**.
5. Carefully rotate the **LCD module** from right to left of the LCD cover.
6. Disconnect the **LCD/Inverter cable** from the LCD module and remove the **LCD** from the computer.

TOSHIBA

Tough Enough for Today's World