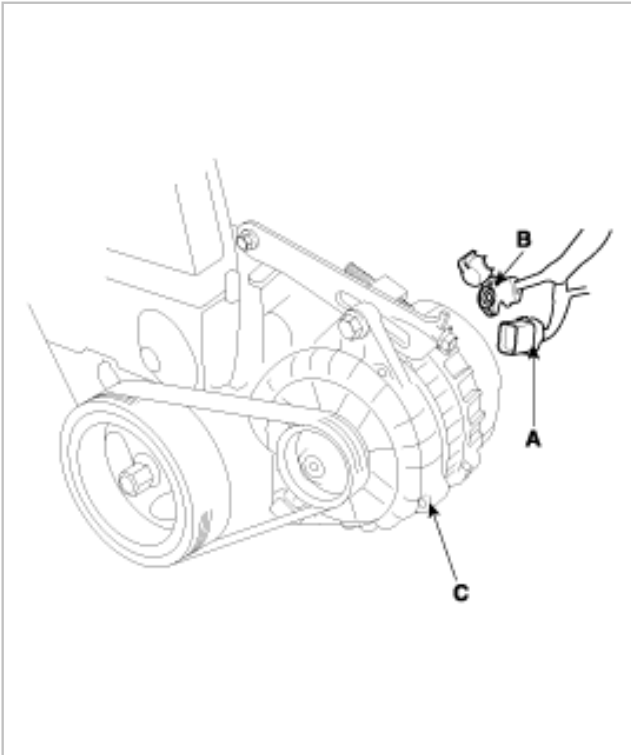


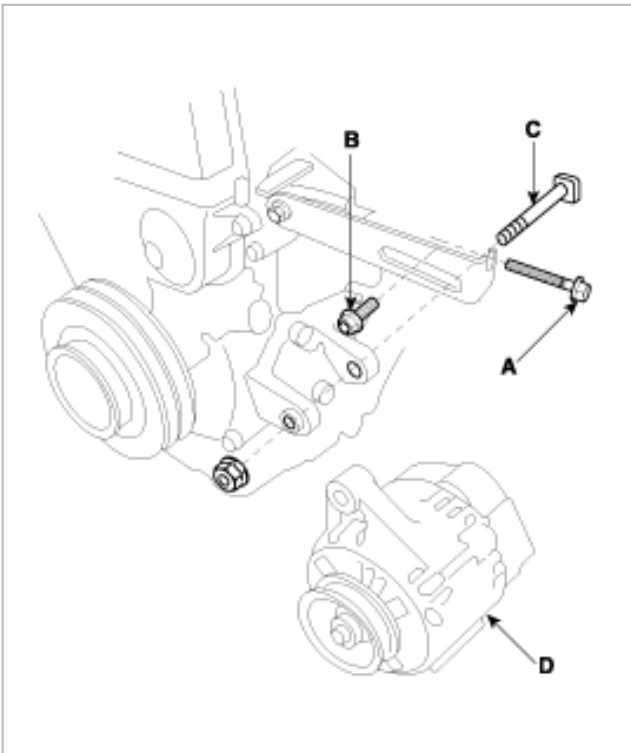


REPLACEMENT

1. Disconnect the battery negative terminal first, then the positive terminal.
2. Disconnect the generator connector(A) and "B" terminal cable(B) from the generator(C).



3. Remove the adjusting bolt(A) and mounting bolt(B), then remove the generator belt(C).
4. Pull out the through bolt(C), then remove the generator(D).



5. Installation is the reverse of removal.

6. Adjust the generator belt tension after installation (See page EE-33).

ALTERNATOR BELT INSPECTION AND ADJUSTMENT

NOTE

When using a new belt, first adjust the deflection or tension to the values for the new belt, then readjust the deflection or tension to the values for the used belt after running engine for five minutes.

Deflection method :

Apply a force of 98N (10 kgf, 22 lbf), and measure the deflection between the alternator and crankshaft pulley.

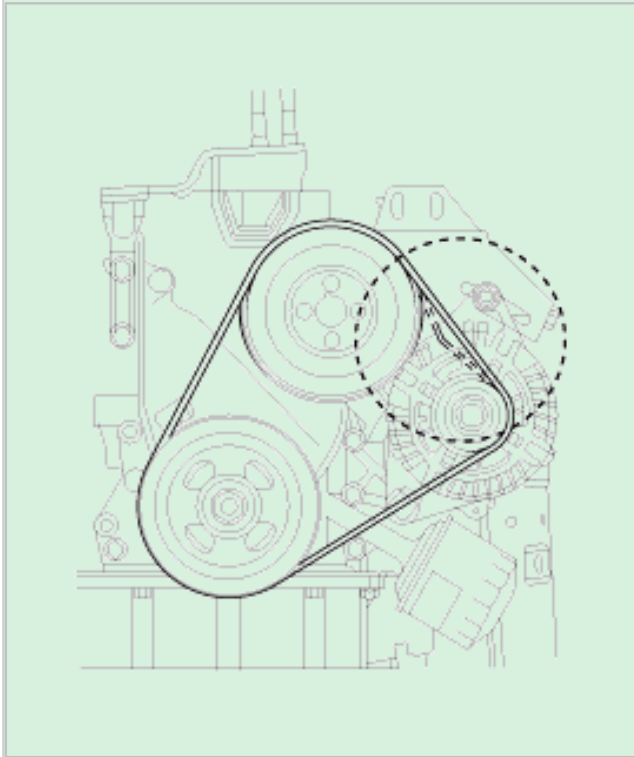
Deflection

Used Belt : 8.5 ~ 11.5 mm (0.33 ~ 0.345 in)

New Belt : 5.5 ~ 8.0 mm (0.22 ~ 0.361 in)

NOTE

If the belt is worn or damaged, replace it.



Belt tension gauge method :

Attach the belt tension gauge to the belt and measure the tension. Follow the gauge manufacturer's instructions.

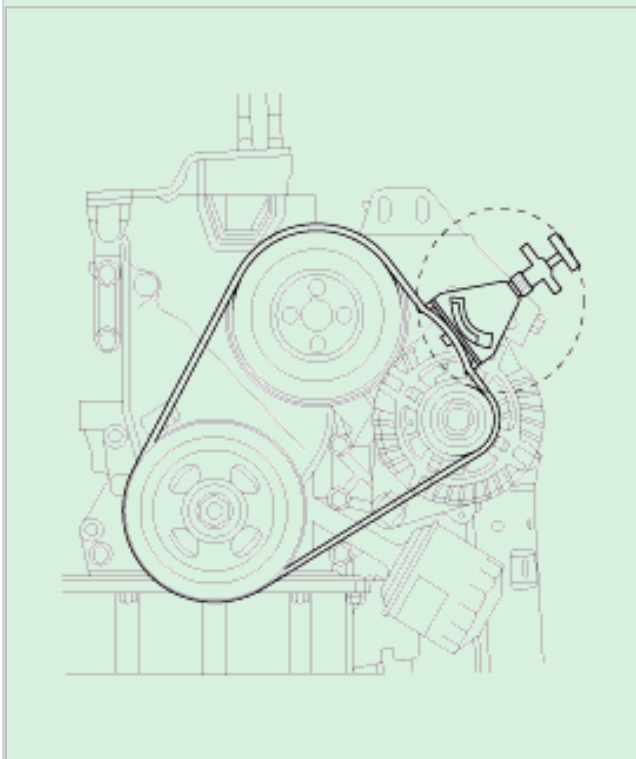
Tension

Used Belt : 340~490 N (35~50 kgf, 77~110 lbf)

New Belt : 690~880 N (70~90 kgf, 150~200 lbf)

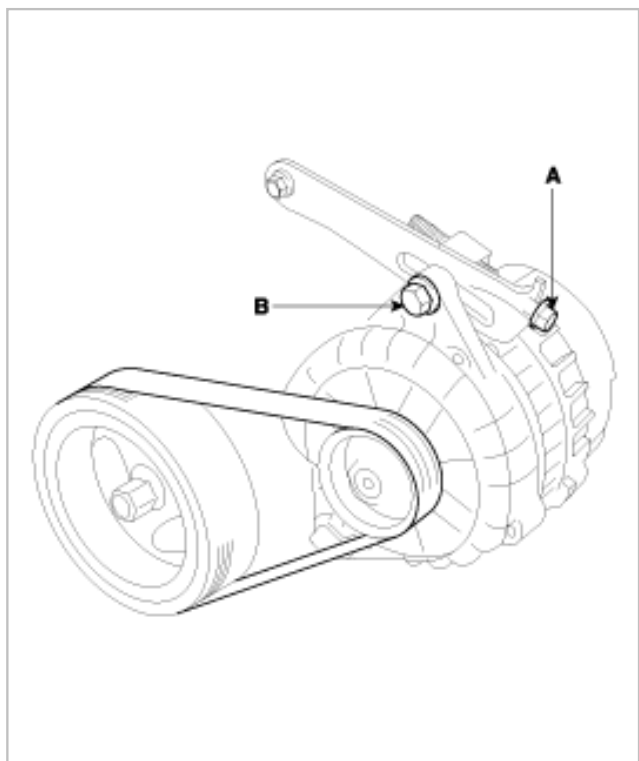
NOTE

If the belt is worn or damaged, replace it.



If adjustment is necessary :

1. Loosen the adjusting bolt(A) and the lock bolt(B).
2. Move the alternator to obtain the proper belt tension, then retighten the nuts.



3. Recheck the deflection or tension of the belt.

NOTE

For the power steering pump belt and A/C compressor belt adjustments, refer to section 17 and section 22.