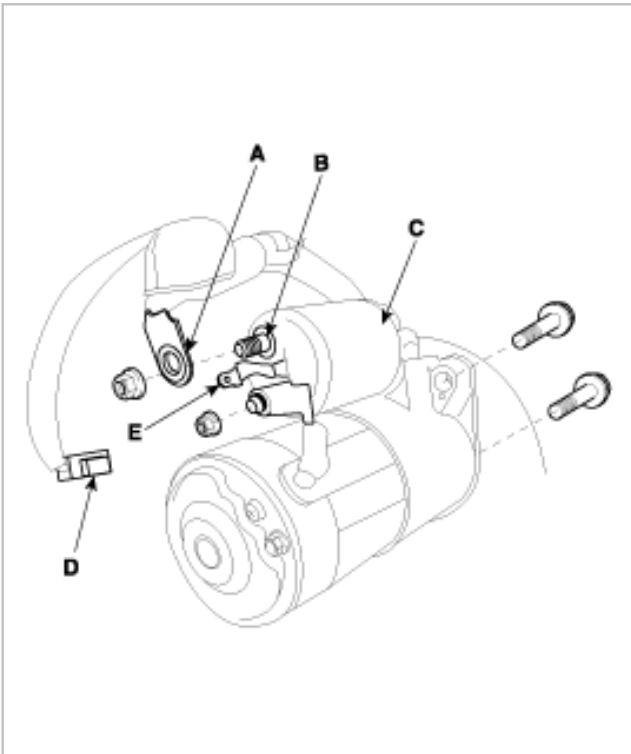




REPLACEMENT

1. Disconnect the battery negative cable.
2. Disconnect the starter cable(A) from the B terminal(B) on the solenoid(C), then disconnect the connecto(D) from the S terminal(E).



3. Remove the 2 bolts holding the starter, then remove the starter.
4. Installation is the reverse of removal.
5. Connect the battery negative cable to the battery.