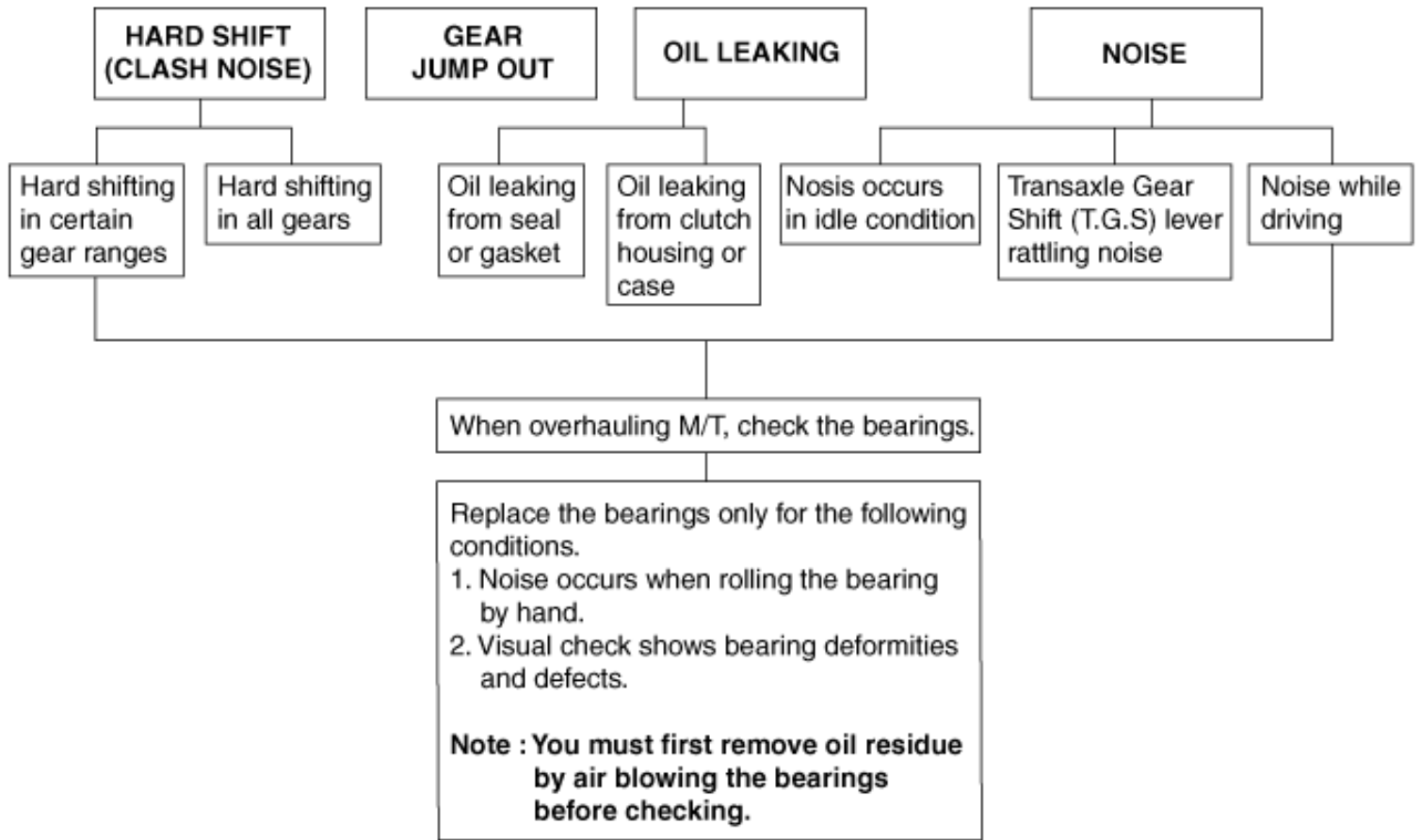
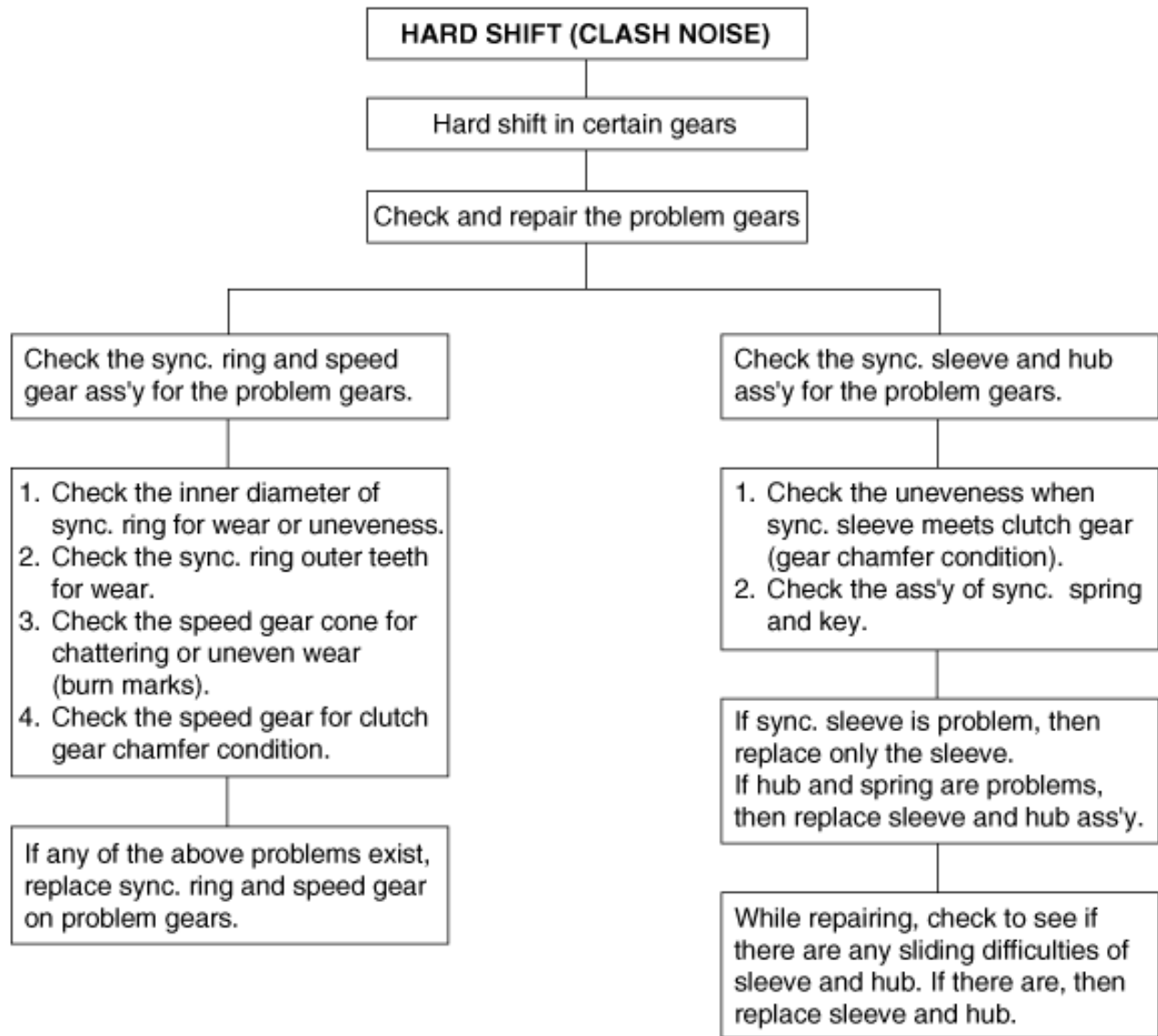
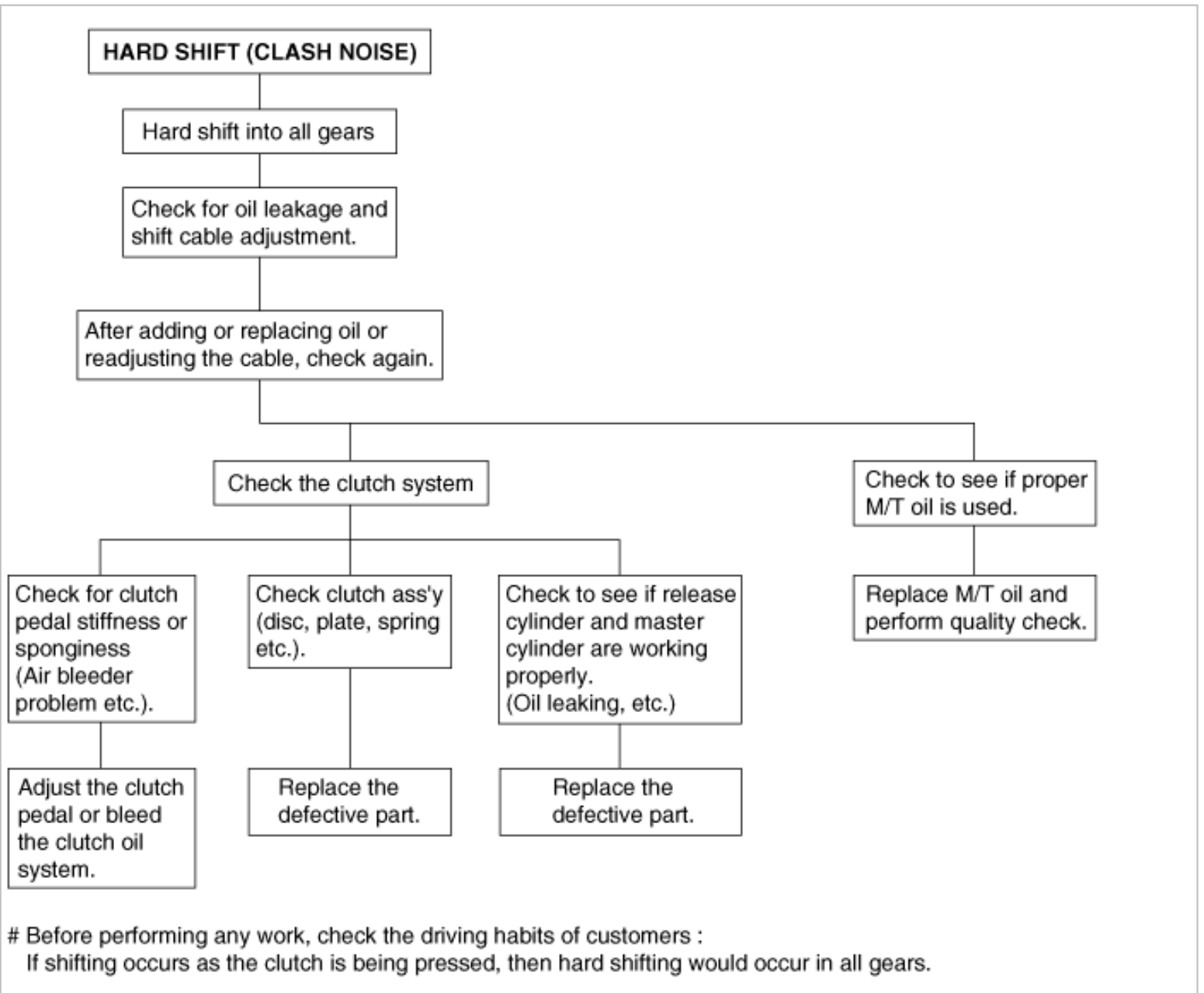


## INSPECTION PROCEDURE FOR TROUBLE SYMPTOMS







### GEAR JUMPS OUT

Check the adjustment of T.G.S cable

After cable adjusting, test again.

Jumps out of forward gear

Check and replace component for following problems.

1. Poppet spring & ball is missing.
2. The shape of the sync. sleeve teeth in problem gear is deformed.
3. Needle bearing missing in problem gear.
4. Worn out shift fork.
5. Input shaft bearing retainer worn.
6. The shape of the clutch gear teeth in problem gear is deformed.

Jumps out of reverse gear

Check and replace component for following problems.

1. Reverse lever ass'y worn.
2. Reverse gear worn.
3. 1st and 2nd sleeve worn.

### OIL LEAKING

1. Check oil seal for oil leak.  
(Differential oil seal, input shaft seal)
2. Check control shaft seal for oil leaks.
3. Check gasket.

1. After replacing seal and gasket, see if no leaks exists.
2. If oil leaks from control shaft seal, replace control shaft ass'y.

Check to see if there are damages to the other parts because of oil leaks.

Oil leaks due to cracks or deformities in clutch housing & T/M case because of improper casting. Replace clutch housing or T/M case.  
Check to see if there are damages to other parts because oil leaks.

