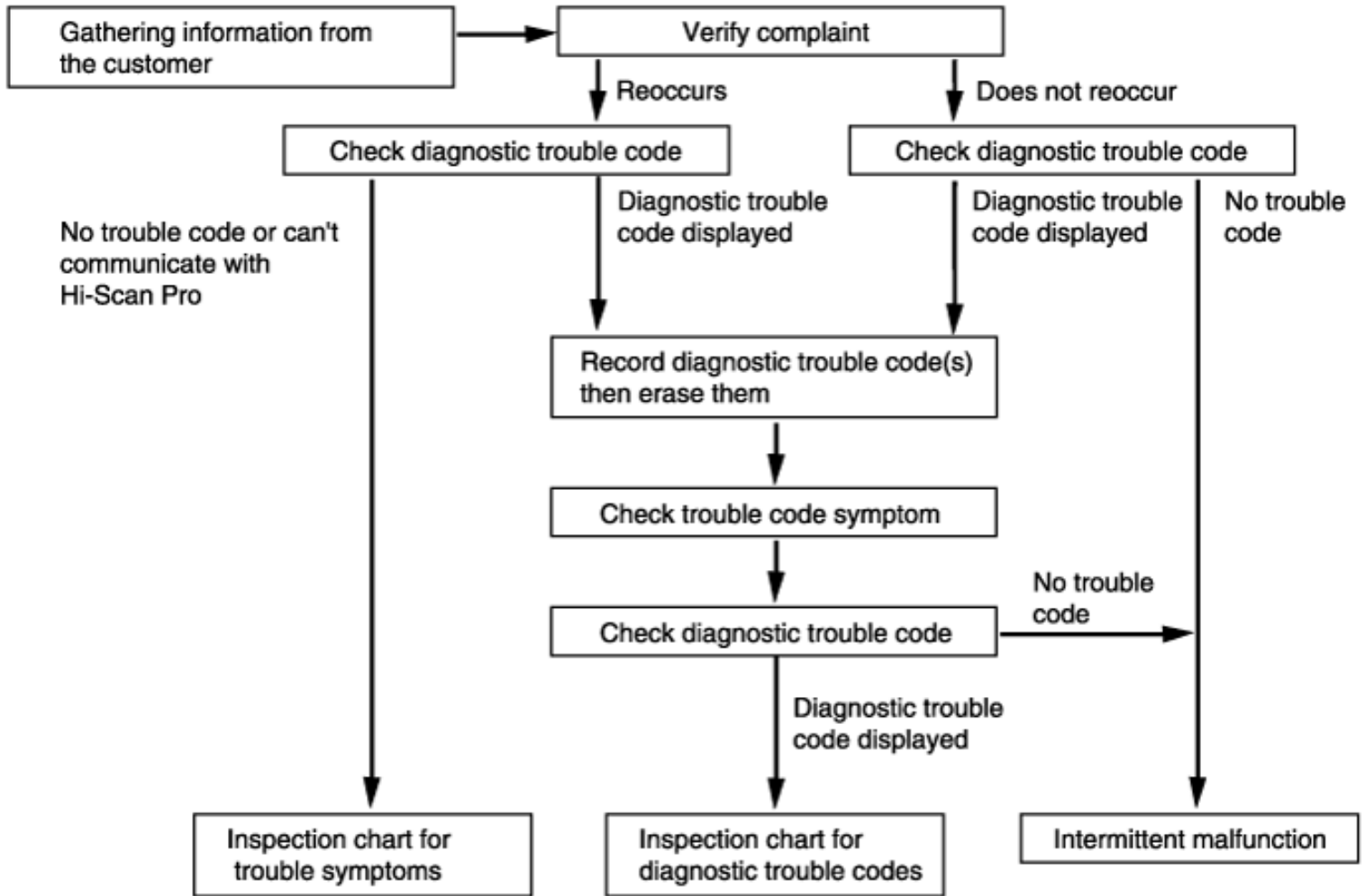


DIAGNOSTIC TROUBLESHOOTING FLOW



OPTION : DAB + PAB + SAB + BPT (ADVANCED AIRBAG)

DTC No.	Fault description
B1111	Battery voltage too high
B1112	Battery voltage too low
B1338	
B1339	Front impact sensor communication error
B1346	1st stage Driver airbag (DAB), Resistance too high

B1347	1st stage Driver airbag (DAB), Resistance too low
B1348	1st stage Driver airbag (DAB), Short to ground
B1349	1st stage Driver airbag (DAB), Short to battery
B1352	1st stage Passenger airbag (PAB), Resistance too high
B1353	1st stage Passenger airbag (PAB), Resistance too low
B1354	1st stage Passenger airbag (PAB), Short to ground
B1355	1st stage Passenger airbag (PAB), Short to Battery
B1361	Driver seat belt pretensioner (DBPT), Resistance too high
B1362	Driver seat belt pretensioner (DBPT), Resistance too low
B1363	Driver seat belt pretensioner (DBPT), Short to ground
B1364	Driver seat belt pretensioner (DBPT), Short to battery
B1367	Passenger seat belt pretensioner (PBPT), Resistance too high
B1368	Passenger seat belt pretensioner (PBPT), Resistance too low
B1369	Passenger seat belt pretensioner (PBPT), Short to ground
B1370	Passenger seat belt pretensioner (PBPT), Short to battery
B1378	Driver side airbag (DSAB), Resistance too high
B1379	Driver side airbag (DSAB), Resistance too low
B1380	Driver side airbag (DSAB), Short to ground
B1381	Driver side airbag (DSAB), Short to battery
B1382	Passenger side airbag (PSAB), Resistance too high
B1383	Passenger side airbag (PSAB), Resistance too low
B1384	Passenger side airbag (PSAB), Short to ground
B1385	Passenger side airbag (PSAB), Short to battery
B1387	Driver seat-track position sensor short to ground
B1388	Driver seat-track position sensor short to battery
B1389	Driver seat-track position sensor defect
B1390	Passenger seat-track position sensor short to ground
B1391	Passenger seat-track position sensor short to battery
B1392	Passenger seat-track position sensor defect
B1400	Side impact sensor driver side defect
B1403	Side impact sensor passenger side defect
B1409	Side impact sensor driver side communication error

B1410	Side impact sensor passenger side communication error
B1447	Passenger OC ECU defect
B1448	Passenger OC sensor defective.
B1449	Passenger OC communication error
B1450	Passenger OC wrong ID
B1481	2nd stage driver airbag, Resistance too high
B1482	2nd stage driver airbag, Resistance too low
B1483	2nd stage driver airbag, Short to ground
B1484	2nd stage driver airbag, Short to battery
B1485	2nd stage passenger airbag, Resistance too high
B1486	2nd stage passenger airbag, Resistance too low
B1487	2nd stage passenger airbag, Short to ground
B1488	2nd stage passenger airbag, Short to battery
B1511	Driver seat buckle switch short to battery
B1512	Driver seat buckle switch short to ground
B1513	Passenger seat belt switch short to battery
B1514	Passenger seat belt switch short to ground
B1515	Driver seat belt switch defect
B1516	Passenger seat belt switch defect
B1620	Internal failure
B1650	Crash recorded (Frontal)
B1651	Crash recorded driver side airbag (Side Airbag)
B1652	Crash recorded passenger side airbag (Side Airbag)
B1657	Crash recorded (Belt pretensioner only)
B1670	2nd stage crash recorded
B2500	Warning lamp failure
B2502	Tell tale lamp failure

NOTE

- The DAB is located in the steering wheel.
- The PAB is located in the crash pad.
- The DSAB is located in the left side of driver's seat.
- The PSAB is located in the right side of passenger's seat.