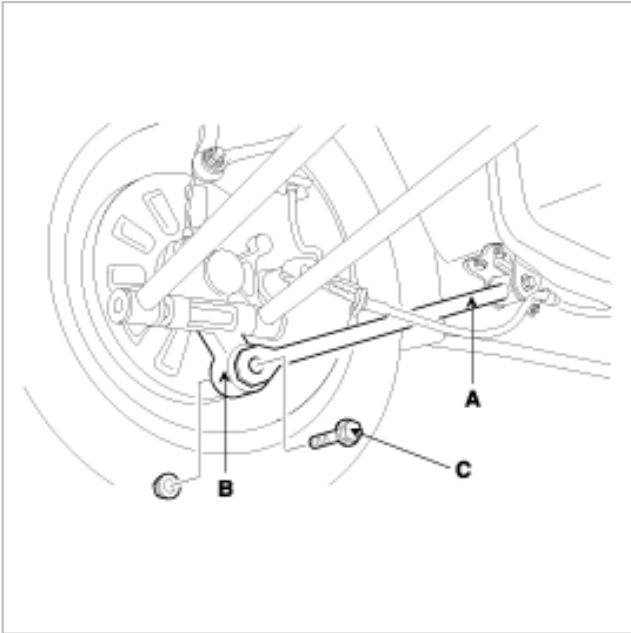


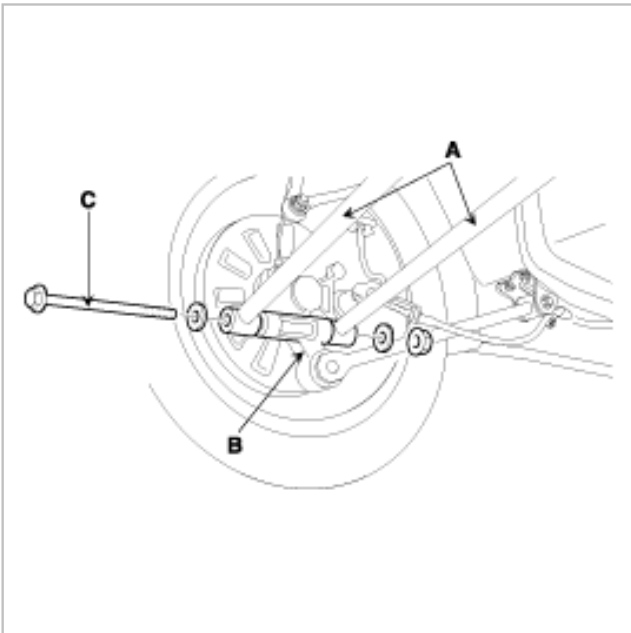


REMOVAL

1. Remove the bolt (C) fixing the trailing arm (A) to the rear carrier (B).



2. Remove the bolt (C) fixing the rear suspension arm (A) to the rear carrier (B).

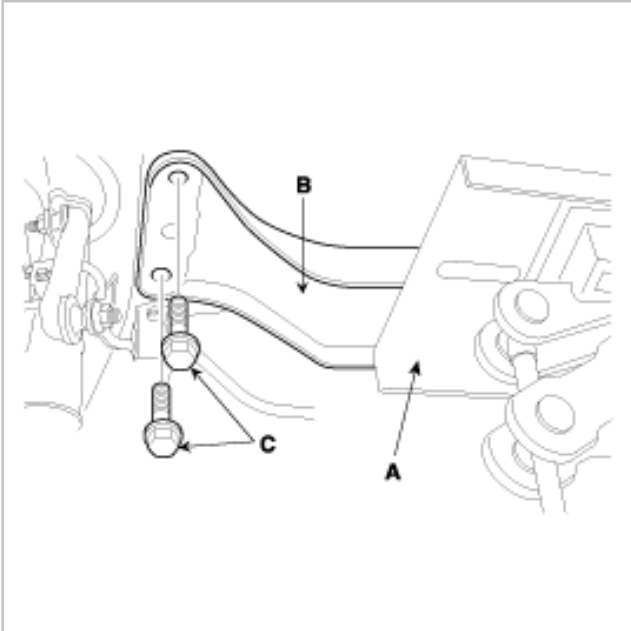


3. Employ the same manner described above step 1 and step 2 to the other side.

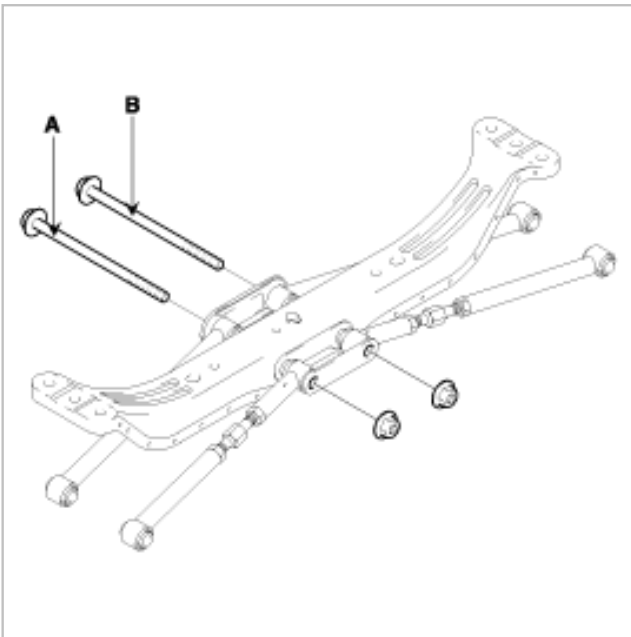
4. After supporting the rear cross member assembly (B) with a jack (A), remove the two cross member fixing bolts (C). Employ the same manner described above to the other side.

CAUTION

The rear cross member assembly (B) is unstable on the jack(A); be careful not to allow it to fall.



5. Lowering the jack, remove the rear cross member and rear suspension arms as an assembly.
6. Remove the two rear suspension arm-to-cross member bolts (A, B).



7. Remove the rear suspension arms.

INSTALLATION

1. Installation is in the reverse order of removal (See page SS-52).

2. Reassemble the rear suspension arms (C) and the rear cross member (A) as shown below. Make sure that the arrow mark (B) on the rear cross member (A) should place the front face of the vehicle.

Rear suspension arm (C) -to-rear carrier bolts should be temporarily tightened, and then fully tightened with the vehicle on the ground in unloaded condition.

